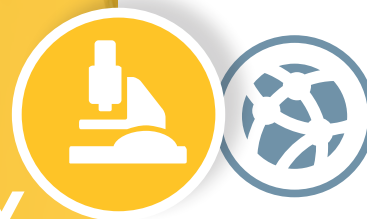
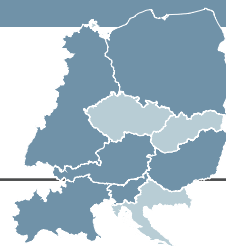


# BRIDGING ISLANDS OF INNOVATION IN PRODUCTION TECHNOLOGY



Rapid prototyping and 3D printing have the potential to revolutionise our approach to mass production, but the laboratories making progress in this field in central Europe work in isolated “islands of innovation”. 3D Central helps to strengthen the impact of these innovators by uniting their knowledge and efforts through an online learning platform and other tools.

[www.interreg-central.eu/3DCentral](http://www.interreg-central.eu/3DCentral)



AUSTRIA	Steiermark
GERMANY	Chemnitz   Stuttgart
HUNGARY	Nyugat-Dunántúl
ITALY	Provincia Autonoma di Bolzano/Bozen   Lombardia
POLAND	Małopolskie
SLOVENIA	Zahodna Slovenija   Vzhodna Slovenija



PROJECT BUDGET

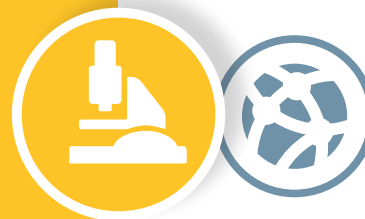
**1.71**  
**MILLION €**

ERDF FUNDING

**1.40**  
**MILLION €**

**PROJECT LEAD PARTNER:**  
**IDM Suedtirol Alto Adige, Italy**

**DURATION:** July 2016 – November 2018



**Interreg**  
CENTRAL EUROPE



**3DCentral**

## Selected main project outputs

Transnational roadmap and action plan  
for 11 CE relevant knowledge axes

Mapping tool for repeatable transfer  
and innovation processes

Tech&Inno Camps

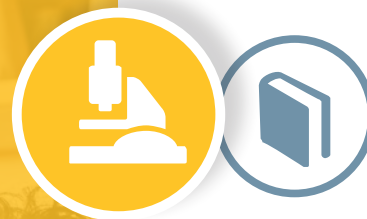
## Pilot actions

Piloting the system of Tech&Inno Camps covering a variety of  
target groups on 11 knowledge axes topics

- > Additive manufacturing
- > 3D Design/Engineering/Scanning
- > Smart and functional materials
- > Digital life
- > Technologies for sustainable manufacturing
- > Virtual/augmented reality in manufacturing
- > Value added virtual supply chains
- > Smart services
- > Robotics
- > Mechatronics
- > CEE Brain Base

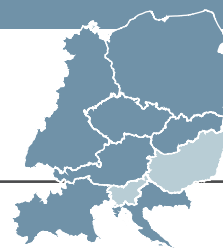


# BUILDING A CULTURE OF ENTREPRENEURSHIP



Innovative entrepreneurs can develop novel technologies, products and services that improve our lives. But the laws and mindset in central Europe means our start-ups start from behind. CERlecon uses a balanced package of strategies, actions plans, pilot actions, training and tools in seven central European regions, to show how we can change laws and attitudes to support entrepreneurs, starting from the regional smart specialization strategies.

[www.interreg-central.eu/CERlecon](http://www.interreg-central.eu/CERlecon)



AUSTRIA	Wien
CROATIA	Jadranska Hrvatska
CZECH REPUBLIC	Jihovýchod   Praha
GERMANY	Stuttgart
ITALY	Veneto
POLAND	Malopolskie
SLOVAKIA	Bratislavský kraj



PROJECT BUDGET

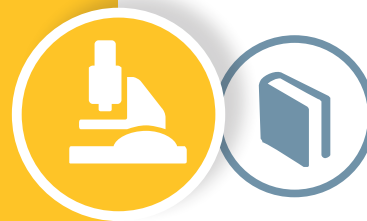
**3.11  
MILLION €**

ERDF FUNDING

**2.55  
MILLION €**

**PROJECT LEAD PARTNER:**  
**Vienna Board of Education,**  
**European Office, Austria**

**DURATION:** July 2016 – May 2019



## Selected main project outputs

Transnational Playpark network to accelerate international growth of small and medium sized companies

---

3 cohorts of start-ups/young SMEs training in Playparks idea generation laboratories

---

eSmart-strategies for regional innovation ecosystems in CE regions

## Pilot actions

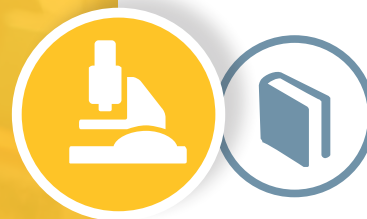
7 regional Playparks piloting the innovation ecosystems and helping start-ups to grow in the participating regions

- Bratislava
  - Brno
  - Krakow
  - Rijeka
  - Stuttgart
  - Venice
  - Vienna
- 

### Network of Playparks:

Transnational pilot action strengthening the innovation ecosystems network - organised in the form of competition series between start-ups that were mentored in the local Playparks

# WIDENING THE INVESTOR POOL TO SEE NEW IDEAS GROW



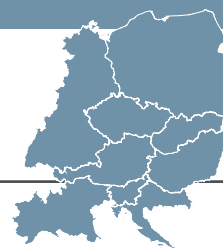
**Interreg**  
CENTRAL EUROPE



**CROWD-FUND-PORT**

Crowdfunding has become a powerful means to support innovative ideas while sharing, and therefore reducing, risks. CROWD-FUND-PORT seeks to develop a crowdfunding culture in central Europe also among policy makers and the civil society, so that our innovators can compete with those in other regions. The project is improving access of SMEs to financing and the ability of underfunded innovators to tap into crowdfunding as a means of realizing worthwhile commercial ideas.

[www.interreg-central.eu/CROWD-FUND-PORT](http://www.interreg-central.eu/CROWD-FUND-PORT)



AUSTRIA	Steiermark   Wien
CROATIA	Kontinentalna Hrvatska
CZECH REPUBLIC	Jihozápad
GERMANY	Berlin
HUNGARY	Közép-Magyarország
ITALY	Emilia-Romagna
POLAND	Pomorskie
SLOVAKIA	Bratislavský kraj
SLOVENIA	Vzhodna Slovenija



PROJECT BUDGET

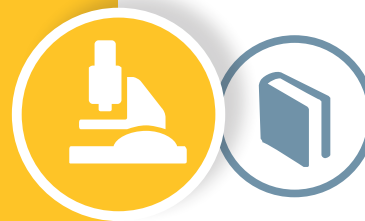
**2.41  
MILLION €**

ERDF FUNDING

**1.99  
MILLION €**

**PROJECT LEAD PARTNER:**  
**E-Institute, Institute for comprehensive  
development solutions, Slovenia**

***DURATION:*** July 2016 – June 2019



**Interreg**   
CENTRAL EUROPE European Union  
European Regional  
Development Fund

**CROWD-FUND-PORT**

## Selected main project outputs

Online capacity building tool ‘Crowdfunding Port’

---

Country specification plans to support crowdfunding

---

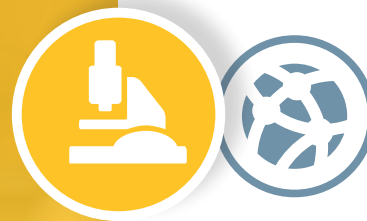
“Public voice” service tool to inform and engage citizens

---

Crowdfunding trainings for SMEs



# ENCOURAGING INCLUSIVE INNOVATION



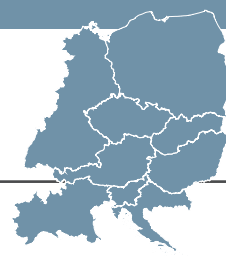
**Interreg**  
CENTRAL EUROPE



**FabLabNet**

FabLabs, or fabrication laboratories, offer a place for collaboration among innovators and society at large. The FabLabNet project supports local laboratories in various countries by uncovering and sharing effective resources among the network. This helps FabLabs to develop innovative services for local communities, business and educational institutions.

[www.interreg-central.eu/FabLabNet](http://www.interreg-central.eu/FabLabNet)



AUSTRIA	Wien
CROATIA	Kontinentalna Hrvatska
CZECH REPUBLIC	Jihovýchod
GERMANY	Oberbayern
HUNGARY	Közép-Magyarország
ITALY	Provincia Autonoma di Trento
POLAND	Śląskie
SLOVAKIA	Bratislavský kraj
SLOVENIA	Zahodna Slovenija



PROJECT BUDGET

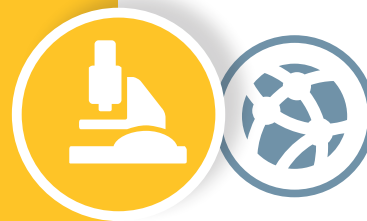
**2.69  
MILLION €**

ERDF FUNDING

**2.22  
MILLION €**

**PROJECT LEAD PARTNER:**  
**MUSE – Science Museum, Italy**

**DURATION:** July 2016 – June 2019



**Interreg**  
CENTRAL EUROPE



**FabLabNet**

## Selected main project outputs

Central Europe FabLab Network

---

High level training programme  
for innovation ecosystem players

---

Fab in a Box, Fab City, Fab Fest formats to engage  
citizens in digital fabrication

## Pilot actions

3 pilot actions strengthening the linkages within the innovation systems

- 
- *Testing FabLabs in education: modular training portfolio targeting primary/secondary/vocational schools, universities and lifelong training providers (IT,AT,CZ,HR,PL,SI,SK))*
- 
- *Fostering FabLabs in business environment in 4 partner locations (IT, DE, HU, HR, SK)*
- 
- *Mentoring Programme for rooting FabLabs in local communities tested in 4 partner locations (IT, CZ, PL, SI)*

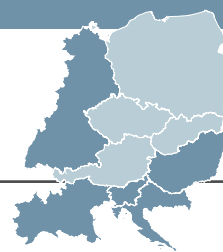


# FIGHTING CELIAC DISEASE WITH INNOVATIVE HEALTH CARE



Healthy and active aging is one of the greatest challenges in view of longer life expectancy. Early prevention of chronic diseases that have severe impact on general well-being is extremely important. A lack of innovative quality health services, disease management models and education have a profound negative effect. Focus in CD will develop and test an innovative health service model to celiac disease, a lifelong digestive ailment that is underdiagnosed.

[www.interreg-central.eu/FocusINCD](http://www.interreg-central.eu/FocusINCD)



CROATIA

Jadranska Hrvatska

GERMANY

Oberbayern

HUNGARY

Közép-Magyarország

ITALY

Friuli-Venezia Giulia

SLOVENIA

Vzhodna Slovenija



PROJECT BUDGET

**1.88**  
**MILLION €**

ERDF FUNDING

**1.55**  
**MILLION €**

**PROJECT LEAD PARTNER:**  
**Municipality of Maribor, Slovenia**

**DURATION:** June 2016 – May 2019



## Selected main project outputs

Interactive e-learning tool for health care professionals  
for celiac disease patients

---

Interactive e-learning tool for patients  
to ease every-day life with celiac disease

---

Policy recommendations for better celiac disease  
management in existing health care systems

---

ICT app for doctors to optimise  
diagnostic and therapeutic decisions

## Pilot actions

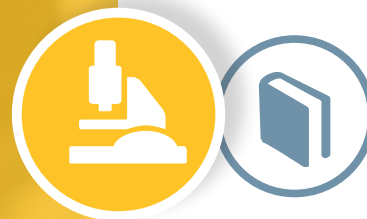
10 pilot actions improving quality of life for celiac disease  
patients

---

- *Mentoring service for newly diagnosed patients (SI)*
- *Simulator testing to improve endoscopist practice in field of celiac disease (SI)*
- *Improvement of early diagnostics (SI)*
- *Improvement of diagnostics by testing 3 novel methods (HR)*
- *Detecting and managing celiac disease patient within a 'cohort of super allergic population' (IT)*
- *Testing for celiac disease antibodies in school children (HR)*
- *Improvement of diagnostic of atypical celiac disease patients (IT)*
- *Implementation and testing of new service to improve transition from paediatric to adult health care (DE)*
- *Evaluation and follow up of family members (HU)*
- *Testing of real life environment use of gluten free-offer in restaurants (HU)*

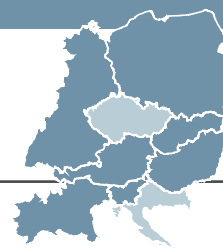


# FEEDING ECONOMIC GROWTH WITH FOOD SECTOR INNOVATION



With the decline of traditional jobs, central European countries face growing unemployment, especially in more isolated areas. I-CON seeks to promote innovative approaches to developing new economic activity, focusing on one field that shows future promise: the food sector and its related value chains. The partners will design and implement a sustainable transnational action plan that will amongst other help to generate competitive advantages for SMEs based around food innovation.

[www.interreg-central.eu/I-CON](http://www.interreg-central.eu/I-CON)



AUSTRIA	Oberösterreich
GERMANY	Stuttgart
HUNGARY	Közép-Magyarország   Dél-Dunántúl
ITALY	Emilia-Romagna   Veneto
POLAND	Mazowieckie
SLOVAKIA	Bratislavský kraj
SLOVENIA	Vzhodna Slovenija   Zahodna Slovenija



PROJECT BUDGET

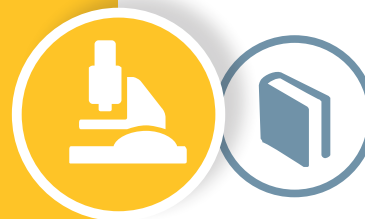
**2.21  
MILLION €**

ERDF FUNDING

**1.83  
MILLION €**

**PROJECT LEAD PARTNER:**  
**Pomurje Technology Park, Slovenia**

**DURATION:** July 2017 – May 2020



**Interreg**  
CENTRAL EUROPE



**I-CON**

## Selected main project outputs

Innovation assessment toolkit for SMEs

---

Strategy for transnational mentor scheme  
on food innovation

---

Training academy for improved food sector  
innovation capacities

---

Atlas mapping tool

## Pilot actions

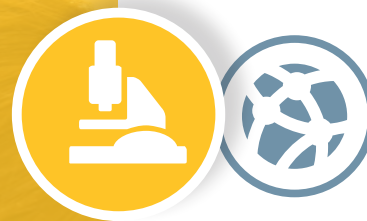
2 pilot actions improving skills and competences of employees  
and entrepreneurs

---

- *Testing the usability of the crowdsourcing platform aimed to leverage business opportunities in the field of food packaging design and branding.*
- 

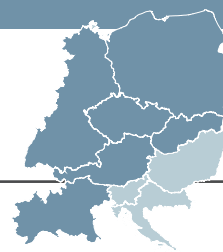
- *Testing the transnational food mentor scheme*

# MAKING MECHATRONIC INDUSTRIES MORE INNOVATIVE



Most of the European Union's leading automation and mechatronic industries are located in central Europe and although their business dimension is intercontinental, their innovation-related services often remain local. NUCLEI seeks to improve innovation management in this field, to help new ideas get to market faster. The project involves seven local clusters to create a transnational pool of knowledge that supports advanced manufacturing innovation beyond regional borders.

[www.interreg-central.eu/NUCLEI](http://www.interreg-central.eu/NUCLEI)



AUSTRIA	Oberösterreich
CZECH REPUBLIC	Praha
GERMANY	Schwaben   Oberbayern   Stuttgart
ITALY	Emilia-Romagna   Veneto
POLAND	Dolnośląskie
SLOVAKIA	Východné Slovensko



PROJECT BUDGET

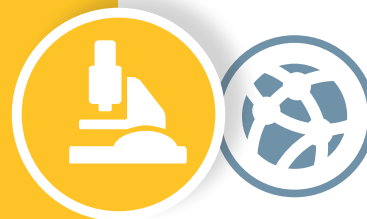
**2.20  
MILLION €**

ERDF FUNDING

**1.80  
MILLION €**

**PROJECT LEAD PARTNER:**  
**Centre of Research and  
Technological Innovation, Italy**

**DURATION:** July 2016 – June 2019



**Interreg**   
CENTRAL EUROPE European Union  
European Regional  
Development Fund

**NUCLEI**

## Selected main project outputs

Strategy for advanced manufacturing innovation ecosystems  
to integrate SMEs into world-class cluster

---

Trainings with smart specialisation strategies managers  
to develop the regional action plans

---

Support tool to speed up access to  
the most promising ready-to-trade R&D

## Pilot actions

3 pilot actions strengthening linkages within the innovation  
systems

---

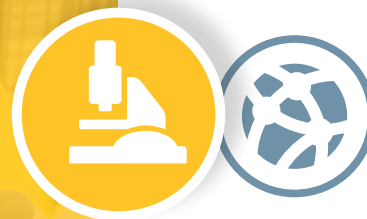
- *Piloting new service of technology showcase in a  
transnational open innovation environment*
- 

- *Piloting new service of knowledge sharing to manage crosscut  
innovation challenges in automation*
- 

- *Addressing central European strategies for systems  
standardisation and interoperability*



# HELPING THE PUBLIC SECTOR PROCURE INNOVATIVE IDEAS



Like private businesses, the public sector needs innovation to remain efficient and effective. To ensure better uptake of innovation by the public sector, PPI2Innovate seeks to support public procurement of innovative solutions (PPI). The PPI2Innovate project offers training for public procurers on all administrative levels in central Europe, to improve their ability to obtain innovations that can help society.

[www.interreg-central.eu/PPI2Innovate](http://www.interreg-central.eu/PPI2Innovate)



CROATIA	Kontinentalna Hrvatska
CZECH REPUBLIC	Severovýchod
HUNGARY	Közép-Dunántúl   Dél-Dunántúl
ITALY	Piemonte
POLAND	Lubelskie   Podkarpackie
SLOVENIA	Zahodna Slovenija



PROJECT BUDGET

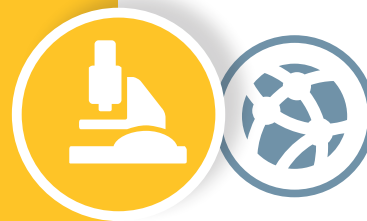
**1.66  
MILLION €**

ERDF FUNDING

**1.39  
MILLION €**

**PROJECT LEAD PARTNER:**  
**Central Transdanubian Regional  
Innovation Agency, Hungary**

**DURATION:** June 2016 – August 2019



## Selected main project outputs

Network of central European PPI competence centres

---

PPI2Innovate tools for smart health, energy and ICT solutions

---

Training module on PPI2Innovate tools

---

Regional and national action plans for operation of  
PPI competence centres

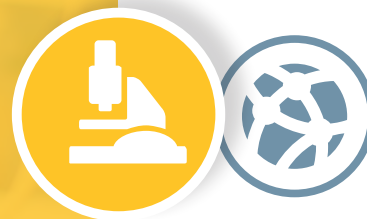
## Pilot actions

4 pilot actions using PPI2Innovate tools and competence centres

---

- *SMART energy local PPI project | Lublin (PL)*
- *SMART health county PPI project | Somogy County (HU)*
- *SMART energy regional PPI project | Piemonte region (IT)*  
*SMART ICT national PPI project | Slovenia*

# HELPING INNOVATION TO CROSS BORDERS



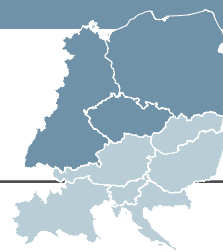
**Interreg**  
CENTRAL EUROPE



**TRANS<sup>3</sup>Net**

While the area that includes the borderlands of Germany, Czech Republic and Poland is home to cutting-edge innovators, brilliant ideas can remain isolated in their country of conception. To change this, TRANS<sup>3</sup>Net will establish a transnational cooperation network of “transfer promoters” who will serve as a contact point for representatives of science and economy. The network will also support transnational projects between science and economy and contribute to building up a well working innovation system in this tri-national region.

[www.interreg-central.eu/TRANS3Net](http://www.interreg-central.eu/TRANS3Net)



CZECH REPUBLIC  
GERMANY  
POLAND

Severozápad  
Dresden | Chemnitz  
Dolnośląskie



PROJECT BUDGET

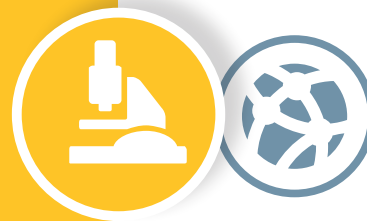
**1.82  
MILLION €**

ERDF FUNDING

**1.50  
MILLION €**

**PROJECT LEAD PARTNER:**  
**Technical University Dresden,**  
**Germany**

**DURATION:** July 2016 – September 2019



**Interreg**   
CENTRAL EUROPE European Union  
European Regional  
Development Fund

**TRANS<sup>3</sup>Net**

## Selected main project outputs

Online map of knowledge and technology transfer promoters

---

Transnational cooperation network of transfer promoters

---

Innovation web platform to facilitate knowledge transfer

---

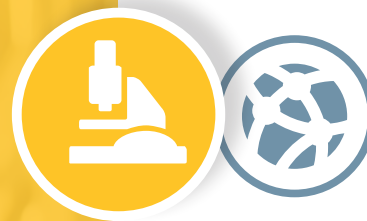
Strategy and action plan for fostering  
transnational cooperation of science and business

## Pilot actions

10 pilot actions to foster transnational knowledge and  
technology transfer thematically focused on manufacturing



# INCREASING PARTICIPATION IN IDEAS THAT HELP CITIES



Brilliant solutions to the challenges of urban living that come out of the public sector can go unused simply because these innovations are not understood by local citizens. URBAN INNO develops new participatory models and executes pilot actions designed to improve networking and exchange among various central European actors involved in urban innovation, and to engage “end users” - the citizens.

[www.interreg-central.eu/urban\\_inno](http://www.interreg-central.eu/urban_inno)



AUSTRIA	Burgenland   Vorarlberg
CROATIA	Jadranska Hrvatska   Kontinentalna Hrvatska
GERMANY	Karlsruhe
HUNGARY	Nyugat-Dunántúl
ITALY	Provincia Autonoma di Trento
POLAND	Świętokrzyskie
SLOVAKIA	Východné Slovensko
SLOVENIA	Vzhodna Slovenija



PROJECT BUDGET

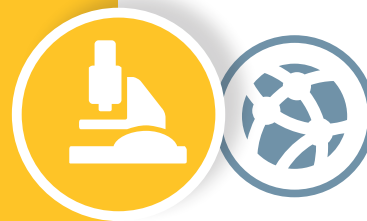
**2.62**  
**MILLION €**

ERDF FUNDING

**2.16**  
**MILLION €**

**PROJECT LEAD PARTNER:**  
**City of Rijeka, Croatia**

**DURATION:** June 2016 – May 2019



## Selected main project outputs

Toolbox of smart urban innovation participatory methods

---

Transnational urban innovation cooperation strategy

---

6 Urban innovation action plans

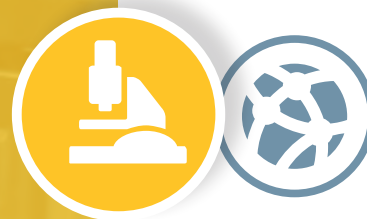
## Pilot actions

9 pilot actions testing the innovative participatory methods in different scenarios

---

- *E-Mobility: Collaborative Business Model Design | Voralberg*
- *Development of energy strategy and hybrid district heating system for the district Neusiedl am See | Burgenland (AT)*
- *Participative methods for eBike infrastructure building with a focus on energy issues | Karlsruhe region (DE)*
- *Industry 4.0 implementation with establishing a Digital Innovation Hub | Vas County (HU)*
- *Engaging citizens in creation of Citizen Collaboration Platform | Rijeka (HR)*
- *Smart City And Smart Users For An Innovative Governance | Trento (IT)*
- *Smart City tool for managing organizations networks, boosting innovation and development | Kielce (PL)*
- *Engaging users in improvement of e-services | Maribor (SI)*
- *Innovative Urban Food System - digital market of agricultural products | Košice (SK)*

# FACILITATING THE USE OF NEW MANUFACTURING TECHNIQUES



**Interreg**  
CENTRAL EUROPE

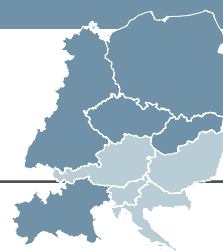


**AMiCE**



Staying competitive in manufacturing means keeping up with advances in fields like 3D printing. To help central Europe compete, AMICE brings together partners from five innovation hubs that prioritise advanced manufacturing methods in their regional strategies. The partners use a shared platform and pilot projects to improve access to knowledge and promote cooperation for commercially viable advanced-manufacturing projects.

[www.interreg-central.eu/AMiCE](http://www.interreg-central.eu/AMiCE)



CZECH REPUBLIC	Severozápad   Severovýchod
GERMANY	Chemnitz   Dresden
ITALY	Liguria
POLAND	Dolnośląskie
SLOVAKIA	Stredné Slovensko   Bratislavský kraj



PROJECT BUDGET

**2.23  
MILLION €**

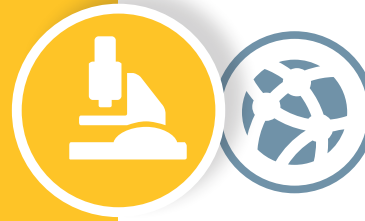
ERDF FUNDING

**1.83  
MILLION €**



**PROJECT LEAD PARTNER:**  
**Chemnitz University of Technology,**  
**Germany**

**DURATION:** August 2017 – July 2020



## Selected main project outputs

Manufacturing innovation 4.0 support strategy

---

Transnational project development support scheme

---

Advanced manufacturing information  
and matchmaking platform

---

Network of shared demonstrators and pilot lines  
related to 3D printing and resource efficient technologies

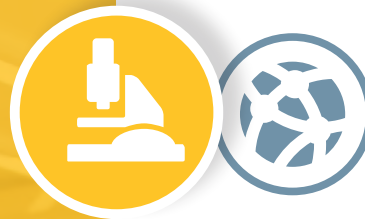
## Pilot actions

Pilot action for the shared use of demonstrators and pilot lines.

---

*11 pilot cases with regional SMEs and/or research groups testing  
the acceptance of the concept and rules developed*

# REDUCING POLLUTION THROUGH BIODEGRADABLE PACKAGING



Plastic is polluting our soil and water, posing a threat to our health. Advances in biodegradable packaging offer a solution, but more producers need to be aware of the availability of better packaging. BIOCOMPACT-CE develops tools to share knowledge in paper and bio plastics, to improve the technology and to help companies understand their packaging options.

[www.interreg-central.eu/BIOCOMPACT-CE](http://www.interreg-central.eu/BIOCOMPACT-CE)



CROATIA	Kontinentalna Hrvatska   Jadranska Hrvatska
HUNGARY	Észak-Alföld
ITALY	Lombardia
POLAND	Mazowieckie   Łódzkie
SLOVAKIA	Bratislavský kraj
SLOVENIA	Zahodna Slovenija   Vzhodna Slovenija



PROJECT BUDGET

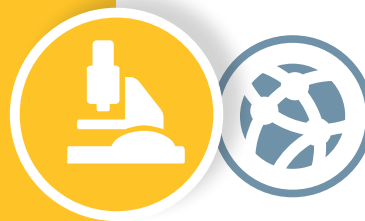
**1.95**  
**MILLION €**

ERDF FUNDING

**1.63**  
**MILLION €**

**PROJECT LEAD PARTNER:**  
**National Institute of Chemistry,  
Slovenia**

**DURATION:** May 2017 – April 2020



## Selected main project outputs

Cross-sectoral business support service  
for paper-bioplastics packaging innovations

---

Central European network platform  
for sustainable paper-plastics packaging solutions

---

Audit tool for assessing companies readiness  
to introduce biodegradable plastics

---

Strategy for innovative paper-bioplastics packaging  
value chain development in central Europe

## Pilot actions

3 pilot actions testing a new business support service for  
paper-plastics packaging innovation

---

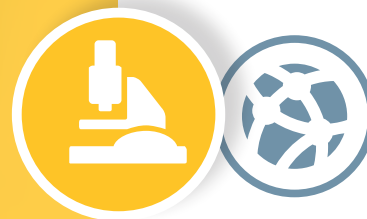
- *Testing the business support service among 3 partner companies*
- 

- *Testing the business support service among 18 companies in six participating countries*
- 

- *Testing the integrated cross-sectoral technology transfer approach*

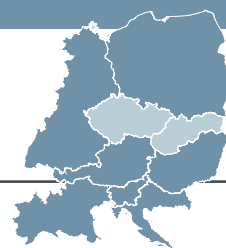


# NURTURING INNOVATION THAT CAN IMPROVE OUR HEALTH



Digital integrated health systems improve the care that we and our loved ones receive. To help ensure that central Europeans get the best care, digitalLIFE4CE supports policy makers and providers of technological solutions in developing better health systems, which can be rapidly activated and transferred to actors of the digital healthcare value chain. The project also supports digital health start-ups, to boost healthcare innovation, while providing the public the benefits of new technologies.

[www.interreg-central.eu/digitalLIFE4CE](http://www.interreg-central.eu/digitalLIFE4CE)



AUSTRIA	Burgenland
CROATIA	Jadranska Hrvatska
GERMANY	Dresden   Leipzig
HUNGARY	Nyugat-Dunántúl
ITALY	Provincia Autonoma di Trento
POLAND	Dolnośląskie
SLOVENIA	Zahodna Slovenija



PROJECT BUDGET

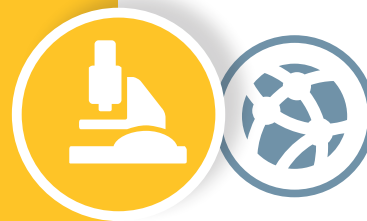
**1.55  
MILLION €**

ERDF FUNDING

**1.27  
MILLION €**

**PROJECT LEAD PARTNER:**  
**University of Applied Sciences**  
**Burgenland, Austria**

**DURATION:** May 2017 – October 2019



## Selected main project outputs

Innovation network alliances for comprehensive  
healthcare systems solutions

---

Transnational roadmap for digital healthcare  
excellence spots in central Europe

---

Strategy and action plan on digital  
healthcare innovation potentials

## Pilot actions

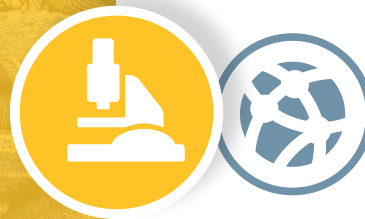
7 pilot demo cases testing the digital healthcare in the central  
European regions

---

- *Concept for “Competence Center for Digital Health” | Burgenland (AT)*
- *New funding programme for e-health start-ups | Saxony (DE)*
- *Digital health solutions, products and services dedicated to the elderly people | Wroclaw (PL)*
- *Roadmap for digital healthcare SMEs by creating a Think-Tank from the Healthday.si community | Ljubljana (SI)*
- *Development and implementation of an information & organisation system for a health care institution | Rijeka (HR)*
- *Generation of new knowledge and training materials for digital healthcare systems | Győr (HU)*
- *TrentinoSalute4.0, the competence centre for development of digital health | Trento (IT)*

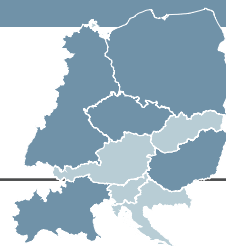


# CUTTING WASTE IN TEXTILE MANUFACTURING



Innovative waste management and recycling methods in textile manufacturing make it possible to reduce and reuse waste. It helps cutting production costs while protecting the environment. ENTeR works in five central European countries that are involved in the textile business, to promote innovative solutions for waste management that will result in a circular economy approach to making textiles.

[www.interreg-central.eu/ENTeR](http://www.interreg-central.eu/ENTeR)



CZECH REPUBLIC	Severovýchod
GERMANY	Chemnitz
HUNGARY	Nyugat-Dunántúl   Közép-Magyarország
ITALY	Lombardia
POLAND	Łódzkie



PROJECT BUDGET

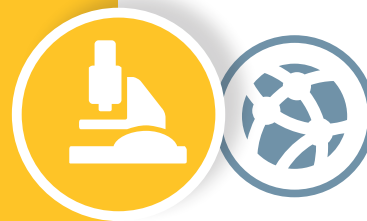
**2.01  
MILLION €**

ERDF FUNDING

**1.65  
MILLION €**

**PROJECT LEAD PARTNER:**  
**Textile Cotton and Clothing Centre,  
Italy**

**DURATION:** July 2017 – June 2020



**Interreg**  
CENTRAL EUROPE



**ENTeR**

## Selected main project outputs

Strategic agenda on textile waste management

---

Textile waste online database and exchange tool

---

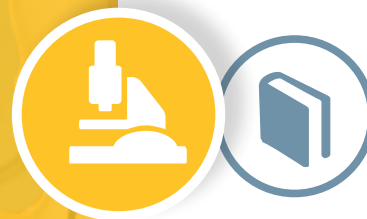
Action plan for guiding the textile industry towards  
circular economy

## Pilot actions

7 pilot actions facilitating an in-depth analysis of waste and the assessment of the environmental impacts leading to the reduction of industrial waste



# KEEPING FAMILY BUSINESSES GROWING



Although family businesses are a major pillar of the central European economy, these companies often fold when the founding members retire. ENTER-Transfer works to develop innovative tools and services to streamline the business succession process and help sustain family companies. The project also supports family firms in finding successors, so their businesses live on.

[www.interreg-central.eu/ENTER-transfer](http://www.interreg-central.eu/ENTER-transfer)



AUSTRIA	Oberösterreich
CROATIA	Jadranska Hrvatska
CZECH REPUBLIC	Jihozápad
POLAND	Mazowieckie
SLOVAKIA	Bratislavský kraj   Východné Slovensko



PROJECT BUDGET

**2.03  
MILLION €**

ERDF FUNDING

**1.70  
MILLION €**

**PROJECT LEAD PARTNER:**  
**University of Economics in**  
**Bratislava, Slovakia**

**DURATION:** June 2017 – May 2020



## Selected main project outputs

**Model for the introduction of business succession  
concept in the central Europe**

---

**Transnational matchmaking tool  
for business succession**

---

**Regional strategies for supporting  
business transfer process**

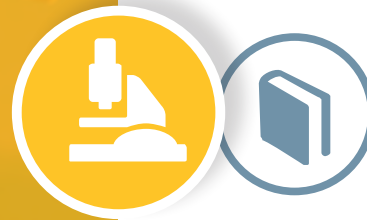
## Pilot actions

**5 pilot actions testing the feasibility of the selected integral  
parts of the business succession model in central Europe**

---

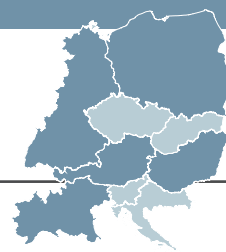
- *Raising awareness and active involvement of the relevant authorities into business succession | Mazowieckie region (PL)*
- *Engaging family business owners and young entrepreneurs into business transfer | Dubrovnik-Neretva region (HR)*
- *Ensuring commitment of young descendants to take over family business instead of corporate jobs | South Bohemia region (CZ)*
- *Verifying the assessment criteria for identification, shortlisting and selection of suitable successors | Prešov region (SK)*
- *Testing measures towards effective knowledge and power transfer plus reflecting on existing knowledge on succession among the family run businesses | Linz-Wels region (AT)*

# TRAINING MANAGERS IN ADVANCED MANUFACTURING



Adopting innovative, advanced manufacturing processes is a major challenge for companies in central Europe. However, advanced manufacturing (AVM) is not only a technological issue. Innovation managers and owners of small companies face huge organisational and strategic challenges linked to AVM. The InnoPeer AVM project will develop and test a first comprehensive and transnational AVM qualification programme, shaped to the needs of central European companies.

[www.interreg-central.eu/InnoPeer\\_AVM](http://www.interreg-central.eu/InnoPeer_AVM)



AUSTRIA

Oberösterreich

GERMANY

Tübingen | Schwaben

HUNGARY

Nyugat-Dunántúl

ITALY

Veneto | Emilia-Romagna

POLAND

Dolnośląskie



PROJECT BUDGET

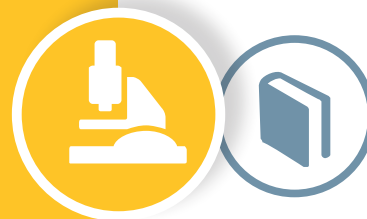
**2.79  
MILLION €**

ERDF FUNDING

**2.26  
MILLION €**

**PROJECT LEAD PARTNER:**  
**Business Upper Austria**

**DURATION:** July 2017 – June 2020



**Interreg**   
CENTRAL EUROPE European Union  
European Regional  
Development Fund

**InnoPeer AVM**

## Selected main project outputs

Regional action plans for improving  
advanced manufacturing capacities in SMEs

---

Online learning platform on advanced manufacturing

---

Training programme on advanced manufacturing  
qualifications standard

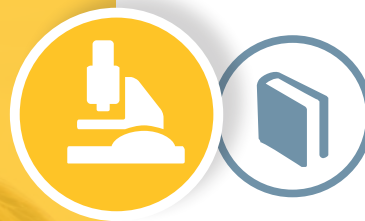
## Pilot actions

5 pilot actions testing the AVM courses in the regions

*Living lab webinars with transnational trainee/trainer groups  
co-creating solutions of AVM Teaching Cases and preparing SME-  
related technological assignments for testing.*



# PROMOTING MORE PATIENT-FOCUSED CANCER CARE



Achieving real improvements in care for cancer patients requires involvement of care-providers, health care managers, policy makers and the patients themselves. The INTENT project unites these actors to create more patient-focused cancer care in central Europe. Along with supporting innovation, the project will issue policy recommendations and provide tools and knowledge to improve the care.

[www.interreg-central.eu/INTENT](http://www.interreg-central.eu/INTENT)



CZECH REPUBLIC	Jihovýchod   Praha
HUNGARY	Közép-Magyarország
ITALY	Veneto   Lazio   Friuli-Venezia Giulia
SLOVENIA	Zahodna Slovenija



PROJECT BUDGET

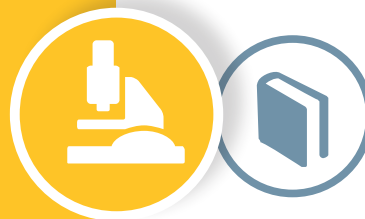
**1.82  
MILLION €**

ERDF FUNDING

**1.50  
MILLION €**

**PROJECT LEAD PARTNER:**  
**Masaryk Memorial Cancer Institute,**  
**Czech Republic**

**DURATION:** July 2017 – June 2020



**Interreg**   
CENTRAL EUROPE European Union  
European Regional  
Development Fund

**INTENT**

## Selected main project outputs

Implementation guidelines for a patient-centred  
cancer care model

---

Performance improvement plans

---

Virtual 'know-how' centre on patient-centred care

---

Online benchmarking tool

## Pilot actions

Piloting the guidelines and online benchmarking tool in 5 pilot  
sites implementing a patient-centred approach

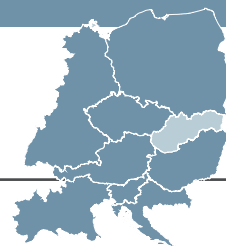
- > *Veneto (IT)*
- > *Friuli-Venezia Giulia (IT)*
- > *South Moravia (CZ)*
- > *Közép Magyarország (HU)*
- > *Western Slovenia*

# BRINGING INNOVATION AND COMMERCE CLOSER TOGETHER



Key Enabling Technologies (KET) drive innovation and improvement across a range of business sectors. KETGATE is a project that connects business support organisations and research institutes to help small- and medium-sized companies access high-level technology. The project partners will help develop a network that can build a KET ecosystem, which makes innovation more accessible to them.

[www.interreg-central.eu/KETGATE](http://www.interreg-central.eu/KETGATE)



AUSTRIA	Steiermark
CROATIA	Kontinentalna Hrvatska
CZECH REPUBLIC	Moravskoslezsko
GERMANY	Stuttgart
HUNGARY	Közép-Magyarország
ITALY	Veneto
POLAND	Śląskie
SLOVENIA	Zahodna Slovenija



PROJECT BUDGET

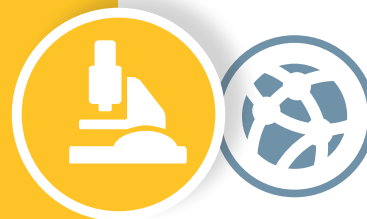
**2.02  
MILLION €**

ERDF FUNDING

**1.66  
MILLION €**

**PROJECT LEAD PARTNER:**  
**Steinbeis-Europe-Centre of  
Steinbeis Innovation, Germany**

**DURATION:** July 2017 – August 2020



**Interreg**  
CENTRAL EUROPE



**KETGATE**

## Selected main project outputs

Strategy for the set up and operation of transnational network  
of key enabling technologies access points

---

Toolbox supporting research organisations  
in transnational service provision to SMEs

---

Action plan for a central Europe  
smart KET access & service network

## Pilot actions

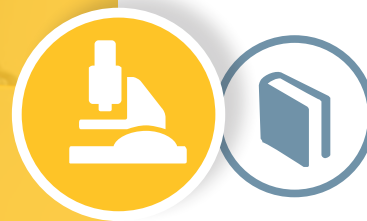
7 pilot actions strengthening linkages within the innovation  
systems

---

- 1 pilot testing the smart access points set-up in 8  
participating regions, focused on *service delivery with small  
and medium sized businesses*
- 3 pilots testing the *cross-border service provision from  
research to businesses*
- 3 pilots testing the cooperation within the group of  
research institutes, focused on *joint transnational service  
offers*



# A ROSIER FUTURE THROUGH RESPONSIBLE INNOVATION



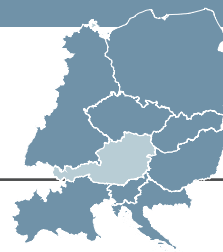
**Interreg**  
CENTRAL EUROPE



**ROSIE**

Responsible innovation involves an ethical approach, engagement of society, gender equality, education, good governance and open access to innovation. The ROSIE project seeks to provide training that entrepreneurs in central Europe need to innovate responsibly. The tools and training developed by the project support local economies by encouraging innovation, and they benefit society by encouraging responsible growth.

[www.interreg-central.eu/ROSIE](http://www.interreg-central.eu/ROSIE)



CROATIA	Jadranska Hrvatska
CZECH REPUBLIC	Praha
GERMANY	Dresden
HUNGARY	Dél-Alföld
ITALY	Emilia-Romagna   Lombardia
POLAND	Lubelskie
SLOVAKIA	Východné Slovensko
SLOVENIA	Zahodna Slovenija



PROJECT BUDGET

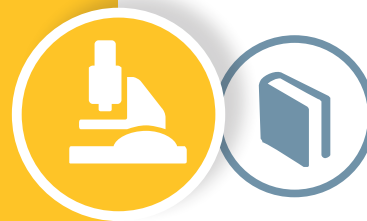
**1.79**  
**MILLION €**

ERDF FUNDING

**1.48**  
**MILLION €**

**PROJECT LEAD PARTNER:**  
**Special Agency of the Chamber of  
Commerce, Forlì-Cesena, Italy**

**DURATION:** July 2017 – June 2020



**Interreg**  
CENTRAL EUROPE



European Union  
European Regional  
Development Fund

**ROSIE**

## Selected main project outputs

ROSIE responsible innovation roadmap

---

ROSIE online workbox tools for responsible innovation  
capacity building

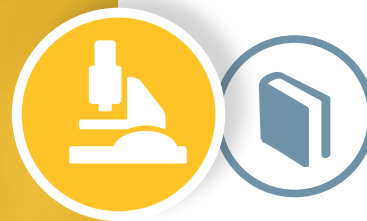
---

Training for SMEs on responsible innovation strategies

## Pilot actions

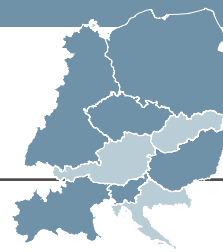
Transnational pilot action testing the ROSIE online tools to  
improve skills and competences for responsible innovation  
among SMEs in all 9 participating regions

# MAKING SOCIAL ENTERPRISES MORE COMPETITIVE



The social economy, which includes social enterprises, such as cooperatives and non-profit associations, provides essential support in disadvantaged parts of central Europe that face a shortage of skilled labour force and negative consequences due to demographic changes. SENTINEL helps social enterprises improve their managerial competences through mentoring and social enterprises incubation services to help them access market and available financing.

[www.interreg-central.eu/sentinel](http://www.interreg-central.eu/sentinel)



CZECH REPUBLIC	Jihovýchod
GERMANY	Berlin
HUNGARY	Közép-Magyarország
ITALY	Provincia Autonoma di Trento   Friuli-Venezia Giulia
POLAND	Podkarpackie
SLOVENIA	Zahodna Slovenija   Vzhodna Slovenija



PROJECT BUDGET

**1.95  
MILLION €**

ERDF FUNDING

**1.62  
MILLION €**

**PROJECT LEAD PARTNER:**  
**Hungarian Charity Service of the  
Order of Malta**

**PROJECT DURATION:** June 2017 – May 2020



## Selected main project outputs

Transnational social enterprise advocacy network

---

Toolbox for social business mentoring services

---

Handbook for the creation and operation of “managed”  
networks of social enterprises

---

National policy recommendations for  
the social enterprises sector

## Pilot actions

5 pilot actions to kick-start new or expand existing social  
enterprises in central Europe

---

2 pilots testing the social enterprise toolbox for start-up  
incubation in disadvantages areas of the regions

- > *Moravian regions (CZ)*
- > *Podkarpackie region (PL)*

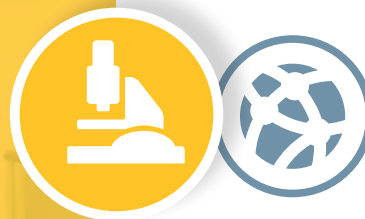
---

3 pilots testing the tailor made social business mentoring services  
in disadvantaged areas of the regions

- > *Carnia and Cadore (IT)*
- > *Podravje (SI)*
- > *Northern Great Plain, Northern-Hungary and Southern-Transdanubia (HU)*

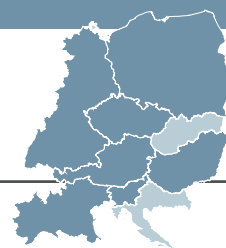


# IMPROVING THE REGIONAL INTEGRATION OF SMART SPECIALISATION



Smart specialisation means that policies for a specific region focus on that area's strengths and comparative advantages. SMART-watch seeks to ensure that smart specialisation is part of central Europe's regional innovation strategies (RIS). The project does this by establishing a system for monitoring RISs: As each region gathers data in different structures, SMART-watch will develop a common methodology and benchmarking tools to improve the situation.

[www.interreg-central.eu/SMART\\_watch](http://www.interreg-central.eu/SMART_watch)



AUSTRIA	Steiermark
CZECH REPUBLIC	Jihozápad
GERMANY	Mecklenburg-Vorpommern
HUNGARY	Észak-Alföld   Nyugat-Dunántúl
ITALY	Veneto   Piemonte
POLAND	Śląskie   Lubelskie
SLOVENIA	Vzhodna Slovenija

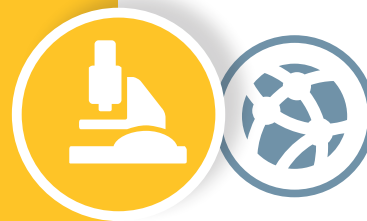


PROJECT BUDGET  
**2.56**  
MILLION €

ERDF FUNDING  
**2.12**  
MILLION €

**PROJECT LEAD PARTNER:**  
**Upper Silesian Agency for Entrepreneurship  
and Development, Poland**

**DURATION:** July 2017 – May 2020



## Selected main project outputs

Competence map for smart specialisation

---

Central Europe network of regional observatories  
of smart specialisations

---

Strategy for tackling common smart  
specialisation challenges

## Pilot actions

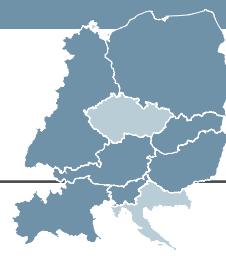
Transnational pilot action testing the functionality and the  
relevance of the competence map with the stakeholders and  
end users

# TEACHING INNOVATION THAT HELPS SOCIETY



Social innovation is the creation of new ideas that address social problems. Social(i)Makers establishes a transnational educational programme to train and connect social innovators in a central Europe-wide community. Social(i)Makers trainees learn to design effective and sustainable social innovation initiatives, and receive help in using their skills to plan initiatives that address actual social challenges.

[www.interreg-central.eu/Social\(i\)Makers](http://www.interreg-central.eu/Social(i)Makers)



AUSTRIA	Wien
GERMANY	Darmstadt   Brandenburg
HUNGARY	Közép-Magyarország
ITALY	Emilia-Romagna
POLAND	Mazowieckie
SLOVAKIA	Bratislavský kraj
SLOVENIA	Vzhodna Slovenija



PROJECT BUDGET

**3.65**  
**MILLION €**

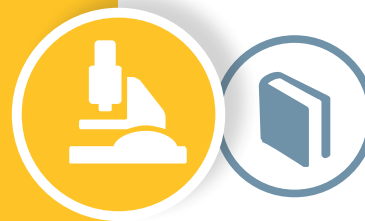
ERDF FUNDING

**3.00**  
**MILLION €**



**PROJECT LEAD PARTNER:**  
**Democenter-Sipe Foundation, Italy**

**DURATION:** August 2017 – July 2020



## Selected main project outputs

On-line social innovation skyrocket platform

---

Social innovation design toolbox

---

Online social innovation design academy model  
and training course

---

Central Europe's Social(i)Makers community strategy

---

Social innovation skyrocket lab model

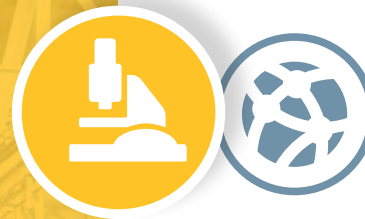
## Pilot actions

8 pilot actions implementing local social innovation initiatives and thus testing the accelerator environment of the *Social innovation skyrocket lab*.

---

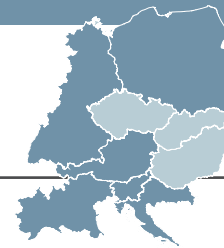
- *Model integrating disadvantaged citizens in communities (DE)*
- *Participatory process to design urban regeneration based on the stakeholders' engagement (AT)*
- *Model for joint management of public green areas including public authorities, citizens and enterprises (SK)*
- *Re-organisation of the local food supply chain offering unsold food to marginalised group of people (PL)*
- *Social housing model based on equalization policies in urban planning (HU)*
- *PPP model for implementing and delivering innovative set of social services (SI)*

# USING SYNERGIES AND NETWORKS FOR BETTER INNOVATION



The pace and quality of innovation in central Europe can improve through better connections between companies, industries, researchers, intermediaries and policy makers. The SYNERGY project aims to strengthen these linkages, especially among actors involved in additive manufacturing and 3D printing, micro- and nanotechnology and the industry 4.0 sector. The project will build networks and facilitate crowd innovation.

[www.interreg-central.eu/synergy](http://www.interreg-central.eu/synergy)



AUSTRIA	Oberösterreich
CROATIA	Jadranska Hrvatska
GERMANY	Chemnitz   Karlsruhe
ITALY	Emilia-Romagna
POLAND	Dolnośląskie
SLOVENIA	Zahodna Slovenija



PROJECT BUDGET

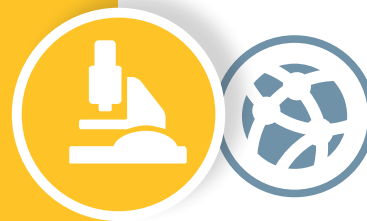
**1.80  
MILLION €**

ERDF FUNDING

**1.48  
MILLION €**

**PROJECT LEAD PARTNER:**  
**Wroclaw University of Technology,**  
**Poland**

**DURATION:** July 2017 – May 2020



**Interreg**   
CENTRAL EUROPE  
European Union  
European Regional  
Development Fund

**SYNERGY**

## Selected main project outputs

Regional innovation competence map

---

Transnational innovation synergy network

---

Synergic crowd innovation platform

---

Synergic consortia and match-making  
open source online tool

## Pilot actions

7 pilot actions strengthening the linkages within the innovation systems

---

Piloting the online tool to identify potential participants of cooperation development process by/within synergic networking.

---

5 crowdfunding and crowdsourcing-related pilots:

- *Simulated crowdfunding*
  - *Vouchers for research/innovation projects*
  - *Rent-A-Robot*
  - *Crowd innovation for companies*
  - *Vouchers for developed solutions of the research projects*
- 

Modelling and prototyping concept of micro-working



# CUTTING-EDGE SUPPORT FOR SOCIAL ENTERPRISES



Work Integration Social Enterprises (WISEs) play an important role in promoting social inclusion in central Europe. They improve employment prospects for those furthest from the labour market but - due to low investment levels and lack of necessary skills - are often disadvantaged compared to other companies. INNO-WISEs aims to change this through a transnational knowledge management framework, a flexible ICT platform, and training programmes for WISEs. Ultimately, this should increase the entrepreneurial mind set and skills of the sector.

[www.interreg-central.eu/INNO-WISEs](http://www.interreg-central.eu/INNO-WISEs)



BELGIUM

Brussels

CROATIA

Kontinentalna Hrvatska

ITALY

Lombardia |  
Provincia Autonoma di Trento

POLAND

Śląskie | Wielkopolskie

SLOVENIA

Zahodna Slovenija |  
Vzhodna Slovenija



PROJECT BUDGET

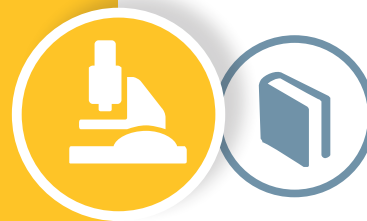
**2.30  
MILLION €**

ERDF FUNDING

**1.90  
MILLION €**

**PROJECT LEAD PARTNER:**  
**Fondazione Politecnico di Milano,**  
**Italy**

**DURATION:** July 2017 – June 2020



**Interreg**   
CENTRAL EUROPE European Union  
European Regional  
Development Fund

**INNO-WISEs**

## Selected main project outputs

Key technologies and management competences  
improvement strategy

---

Technological and managerial competences' training  
for Work Integration Social Enterprises

---

Platform providing managerial and technical tools  
for Work Integration Social Enterprises (WISE)

## Pilot actions

5 pilot actions testing and demonstrating the applicability of  
innovative technologies to WISE sector.

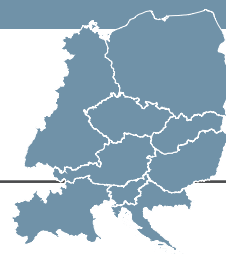
Involved regions in > *Poland, Slovenia, Croatia and 2 regions in  
Italy*

# BOOSTING THE VALUE OF GOODS WITH SERVICES



Central European companies that focus on manufacturing face increasing challenges from low-cost competition in other parts of the world. Small- and medium-sized companies have to adapt their skills to answer to rapid changes in technology. THINGS+ provides production-oriented companies with a new methodology that helps them enrich their current portfolio with additional services. This way they can increase value delivered to customers, improve their position in the market and stay competitive.

[www.interreg-central.eu/THINS+](http://www.interreg-central.eu/THINS+)



AUSTRIA	Salzburg
CROATIA	Jadranska Hrvatska
CZECH REPUBLIC	Jihovýchod
GERMANY	Dresden
HUNGARY	Észak-Magyarország
ITALY	Friuli-Venezia Giulia   Veneto
POLAND	Łódzkie
SLOVAKIA	Bratislavský kraj
SLOVENIA	Zahodna Slovenija



PROJECT BUDGET

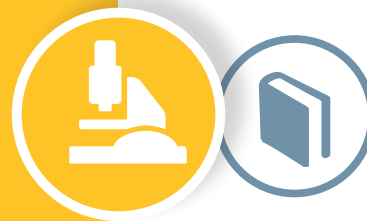
**1.88  
MILLION €**

ERDF FUNDING

**1.55  
MILLION €**

**PROJECT LEAD PARTNER:**  
**Friuli Innovazione Research and  
Technology Transfer Centre, Italy**

**DURATION:** June 2017 – July 2020



**Interreg**   
CENTRAL EUROPE European Union  
European Regional  
Development Fund

**THINGS+**

## Selected main project outputs

Service innovation management guidelines

---

End users training on service innovation management

---

Policy recommendations to support  
introduction of service innovation

## Pilot actions

Pilot actions for improvement of service innovation in 100  
manufacturing SMEs

---

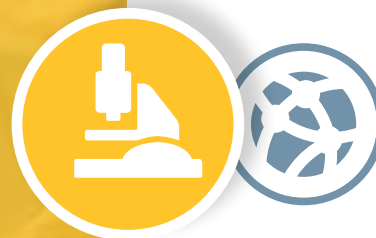
10 servitisation pilot projects: testing new product-based  
services developed and introduced in central Europe

---

2 internationalisation of servitisation pilot projects



# HELPING BUSINESSES TO MANAGE THEIR DIGITAL TRANSFORMATION



**Interreg**  
CENTRAL EUROPE

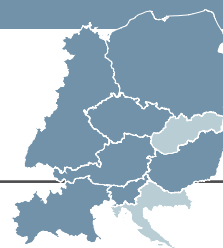


European Union  
European Regional  
Development Fund

**4STEPS**

A new digital industrial revolution is upon us and it is already transforming the way goods are manufactured. Small and medium enterprises in many central European regions, however, lack the know-how to access and implement innovative technologies. With the involvement of academic institutions, industry, government and communities, the 4STEPS project helps businesses in several regions in central Europe to develop innovative production methods and applications of new technology in manufacturing.

[www.interreg-central.eu/4steps](http://www.interreg-central.eu/4steps)



AUSTRIA	Vorarlberg
CZECH REPUBLIC	Severovýchod
GERMANY	Stuttgart
HUNGARY	Nyugat-Dunántúl
ITALY	Emilia-Romagna
POLAND	Śląskie
SLOVENIA	Zahodna Slovenija



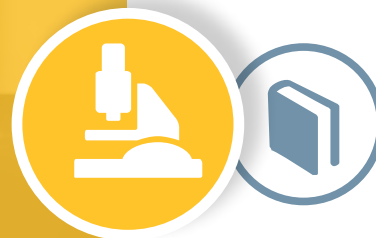
PROJECT BUDGET

**2.09**  
**MILLION €**

ERDF FUNDING

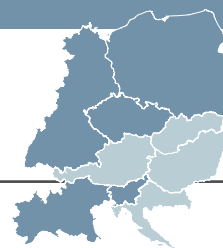
**1.71**  
**MILLION €**

# HOW TO BETTER INTEGRATE MIGRANTS IN SHRINKING REGIONS



The successful integration of migrants can have a positive effect on regions with shrinking populations. The Arrival Regions project helps policymakers in nine rural areas to improve the integration of young non-EU migrants into communities that face both a declining and aging population. Partners are developing a tool box for regions and offer training courses to make integration easier. The project also aims to improve negative perceptions about migration from countries outside the EU.

[www.interreg-central.eu/arrivalregions](http://www.interreg-central.eu/arrivalregions)



CROATIA	Kontinentalna Hrvatska
CZECH REPUBLIC	Jihozápad
GERMANY	Leipzig   Sachsen-Anhalt
ITALY	Piemonte
POLAND	Zachodniopomorskie   Łódzkie
SLOVENIA	Zahodna Slovenija   Vzhodna Slovenija



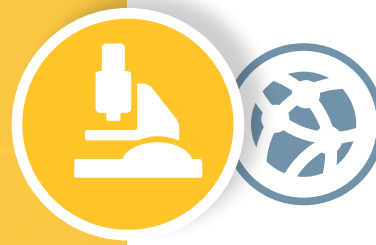
PROJECT BUDGET

**2.20**  
**MILLION €**

ERDF FUNDING

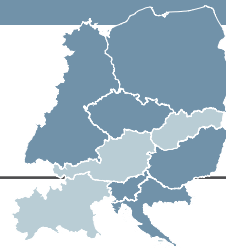
**1.81**  
**MILLION €**

# CONNECTING PEOPLE THAT ARE READY TO INVEST IN START-UPS



Start-ups are key drivers of innovation but many of them are held back by substantial investment gaps. The CE-connector project helps to bridge these gaps: It fosters co-investment schemes between start-ups, public providers who leverage investment, industry, and individuals that are also known as business angels. Creating the right networks and sustainable linkages within and between these players, ultimately enables a successful transregional co-investment in start-ups.

[www.interreg-central.eu/ce-connector](http://www.interreg-central.eu/ce-connector)



CROATIA	Kontinentalna Hrvatska
CZECH REPUBLIC	Severovýchod
GERMANY	Karlsruhe
HUNGARY	Közép-Magyarország
POLAND	Łódzkie   Małopolskie
SLOVENIA	Zahodna Slovenija



PROJECT BUDGET

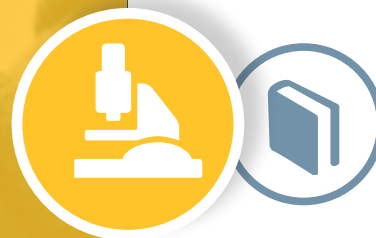
**2.00  
MILLION €**

ERDF FUNDING

**1.68  
MILLION €**

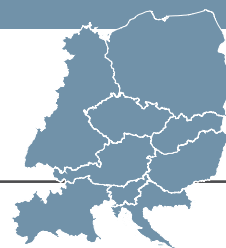


# HELPING SOCIAL BUSINESSES TO START UP IN CENTRAL EUROPE



Entrepreneurs are not necessarily profit-oriented. Some business founders focus their resources such as financial prowess, time and knowledge on social causes that otherwise lack long-term and holistic support. The CE RESPONSIBLE project supports these businesses, which are founded by people that are also known as altru-preneurs. The partners build the capacities of altru-preneurs and social innovators. They also develop a sustainable framework model with guidelines and recommendations for regions that wish for more altru-preneurship.

[www.interreg-central.eu/ce-responsible](http://www.interreg-central.eu/ce-responsible)



AUSTRIA	Salzburg
CROATIA	Kontinentalna Hrvatska
CZECH REPUBLIC	Jihozápad
GERMANY	Berlin
HUNGARY	Közép-Magyarország
ITALY	Emilia-Romagna
POLAND	Świętokrzyskie
SLOVAKIA	Bratislavský kraj
SLOVENIA	Vzhodna Slovenija



PROJECT BUDGET

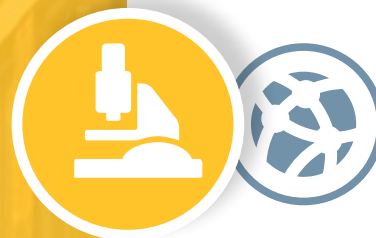
**2.31  
MILLION €**

ERDF FUNDING

**1.91  
MILLION €**



# INTRODUCING CIRCULAR ECONOMY MODELS IN PERIPHERAL CITIES



Urban areas in the periphery are often marked by a lack of innovation and business development, due to their limited access to global innovation processes and cooperation partners. For these cities, the circular economy model can offer solutions for sustainable and resource-efficient development. The CityCircle project equips its partner cities with tools, technologies and knowledge linked to the circular economy model and thereby fosters a new generation of innovation.

[www.interreg-central.eu/citycircle](http://www.interreg-central.eu/citycircle)



AUSTRIA	Vorarlberg
CROATIA	Kontinentalna Hrvatska
GERMANY	Stuttgart
ITALY	Friuli-Venezia Giulia
SLOVAKIA	Východné Slovensko
SLOVENIA	Zahodna Slovenija   Vzhodna Slovenija



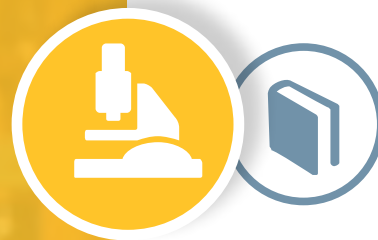
PROJECT BUDGET

**2.00**  
**MILLION €**

ERDF FUNDING

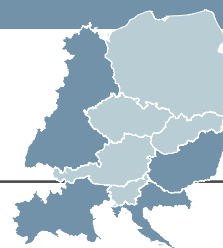
**1.66**  
**MILLION €**

# HOW TO SET UP SOCIAL ENTERPRISES IN RURAL REGIONS



Social enterprises contribute to positive societal change. They create employment and invest profits in their communities. However, rural regions face particular difficulties to support the development of social enterprises. The DelFin project develops and tests new funding schemes that will help to increase regional knowledge of such businesses and how they evolve. Pilot actions and capacity building seminars of the project address both municipalities and finance institutions for the benefit of social entrepreneurs.

[www.interreg-central.eu/delfin](http://www.interreg-central.eu/delfin)



CROATIA

Kontinentalna Hrvatska

GERMANY

Sachsen-Anhalt

HUNGARY

Észak-Alföld |  
Közép-Magyarország

ITALY

Lazio | Piemonte



PROJECT BUDGET

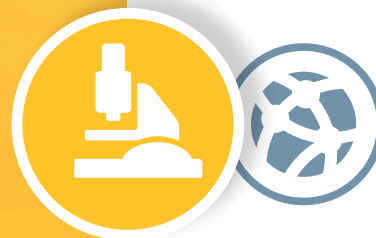
**1.92**  
**MILLION €**

ERDF FUNDING

**1.57**  
**MILLION €**

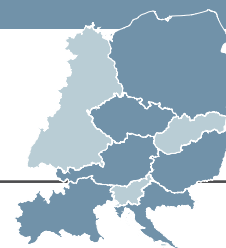


# TAKING ACTION TO SPECIALISE REGIONS IN A SMART WAY



All industrial sectors need prepare for the digital industrial revolution known as Industry 4.0. The ECO4SIN project helps them to do this. The partners enable closer cooperation between all stakeholders that are involved in the development and implementation of smart specialisation strategies. The project ultimately equips regions with action plans to implement smart specialisation strategies and provides relevant materials for forthcoming revisions to these strategies.

[www.interreg-central.eu/ecos4in](http://www.interreg-central.eu/ecos4in)



AUSTRIA	Oberösterreich
CROATIA	Kontinentalna Hrvatska
CZECH REPUBLIC	Severozápad
HUNGARY	Nyugat-Dunántúl
ITALY	Veneto   Lombardia
POLAND	Małopolskie



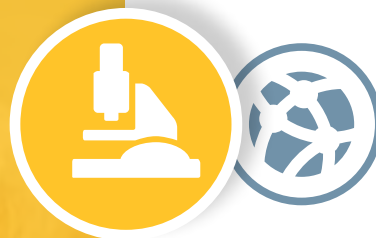
PROJECT BUDGET

**1.47**  
**MILLION €**

ERDF FUNDING

**1.21**  
**MILLION €**

# DESIGNING A BETTER HOME CARE TOGETHER WITH THE ELDERLY



Many home care aids and solutions are technology-based. The elderly that need them most are often reluctant to accept and use them. The HoCare 2.0 project works with co-creation approaches to develop and roll out better and more accepted home care. They bring together enterprises that produce home care solutions with public providers of health and social services and, most importantly, the elderly themselves. This ensures that their needs are fully understood, while at the same time the innovativeness of these solutions can be boosted.

[www.interreg-central.eu/hocare20](http://www.interreg-central.eu/hocare20)



CZECH REPUBLIC	Praha   Severovýchod
GERMANY	Dresden
HUNGARY	Közép-Dunántúl   Közép-Magyarország
ITALY	Lombardia
POLAND	Podkarpackie   Małopolskie
SLOVENIA	Zahodna Slovenija



PROJECT BUDGET

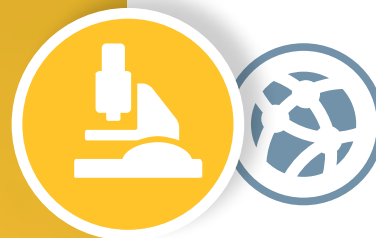
**2.00  
MILLION €**

ERDF FUNDING

**1.66  
MILLION €**

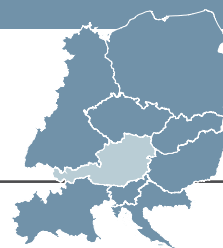


# ADVANCING VALUE CHAIN INNOVATION FOR SMALLER BUSINESSES



Many small- and medium-sized businesses lack the innovation potential of large corporations with strong research and development activities. The CHAIN REACTIONS partners help advanced manufacturing companies to gain more knowledge and increase their ability to innovate. The project uses models to measure innovation potential and capacity, and sets up alliances for an improved value chain innovation between universities, industry and government.

[www.interreg-central.eu/chainreactions](http://www.interreg-central.eu/chainreactions)



CROATIA	Kontinentalna Hrvatska
CZECH REPUBLIC	Jihozápad
GERMANY	Stuttgart   Oberpfalz
HUNGARY	Nyugat-Dunántúl
ITALY	Veneto
POLAND	Dolnośląskie   Śląskie
SLOVAKIA	Východné Slovensko   Západné Slovensko
SLOVENIA	Vzhodna Slovenija



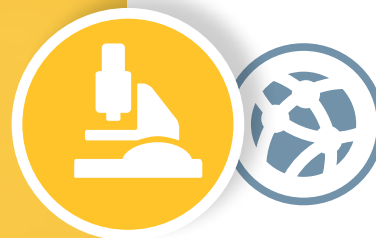
PROJECT BUDGET

**2.09**  
**MILLION €**

ERDF FUNDING

**1.74**  
**MILLION €**

# INVOLVING THE ELDERLY IN CREATING BETTER HEALTH CARE



Health and well-being of the elderly can be improved by the development of innovative products and services. The I-CARE-SMART project brings such innovation closer to the elderly. The partners are creating a structured collaboration framework in which the elderly play a key role. Newly developed practical guidance will also help local and regional authorities to act as facilitators for networks and platforms that allow innovators, enterprises and the elderly to co-create.

[www.interreg-central.eu/i-care-smart](http://www.interreg-central.eu/i-care-smart)



AUSTRIA	Steiermark
CZECH REPUBLIC	Praha
GERMANY	Berlin
HUNGARY	Közép-Magyarország
ITALY	Liguria
POLAND	Łódzkie
SLOVAKIA	Východné Slovensko



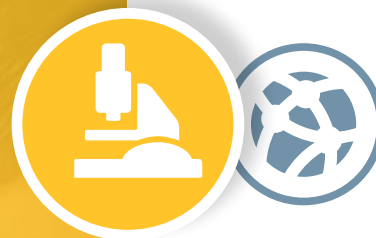
PROJECT BUDGET

**2.59**  
**MILLION €**

ERDF FUNDING

**2.15**  
**MILLION €**

# COOPERATING TO MAKE CLEAN TECH COMPANIES MORE INNOVATIVE



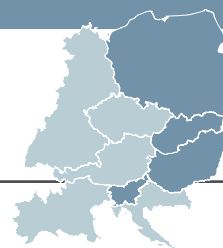
**Interreg**  
CENTRAL EUROPE



**InNow**

Innovative start-ups greatly influence the digital and technology sector. Cooperation with these creative entrepreneurs bears great potentials for large companies. The InNow project facilitates collaboration among them in the clean technology sector. Project partners offer advice, matchmaking and tailor-made solutions to bring together large companies with start-ups and small- and medium-sized companies. This way the project supports an increased innovation capacity in the clean tech sector of participating regions.

[www.interreg-central.eu/innow](http://www.interreg-central.eu/innow)



CROATIA

Kontinentalna Hrvatska

HUNGARY

Észak-Alföld

POLAND

Małopolskie

SLOVAKIA

Bratislavský kraj

SLOVENIA

Zahodna Slovenija



PROJECT BUDGET

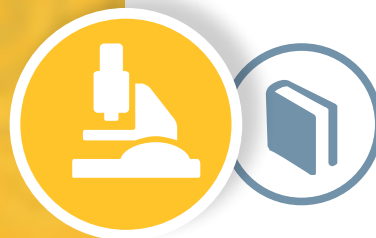
**1.48  
MILLION €**

ERDF FUNDING

**1.26  
MILLION €**



# INTEGRATING DISADVANTAGED GROUPS INTO LABOUR MARKETS



Unemployment continues to be a problem in central Europe and often results in poverty and social exclusion. Unqualified young people and people over 50 are mainly affected and tend to become unemployed long-term. The In SITU project works to bring these two generations together to learn from one another by exchanging experiences and bridging missing skills and competencies. It will develop and implement a tailored business development service and support scheme to promote the integration of disadvantaged groups into the labour market.

[www.interreg-central.eu/insitu](http://www.interreg-central.eu/insitu)



AUSTRIA  
CROATIA  
GERMANY  
ITALY  
POLAND  
SLOVENIA

Wien  
Jadranska Hrvatska  
Stuttgart  
Veneto  
Śląskie  
Vzhodna Slovenija



PROJECT BUDGET

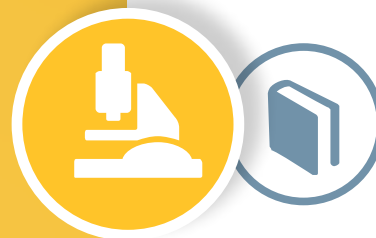
**2.15**  
**MILLION €**

ERDF FUNDING

**1.77**  
**MILLION €**



# FIGHTING DISEASES WITH TECHNOLOGIES THAT WORK ACROSS BORDERS



An aging population and higher occurrences of chronic diseases that lead to social exclusion, present significant challenges to health care systems in central Europe. This situation is worsened by the often slow integration of new technologies and the limited compatibility of these across borders. The NICE-LIFE partners are tackling this issue. They develop an innovative, transnationally applicable health care model, which makes use of key enabling technologies.

[www.interreg-central.eu/nice-life](http://www.interreg-central.eu/nice-life)



AUSTRIA	Wien
CZECH REPUBLIC	Jihovýchod   Strední Morava
ITALY	Emilia-Romagna   Veneto
POLAND	Mazowieckie
SLOVAKIA	Bratislavský kraj
SLOVENIA	Zahodna Slovenija



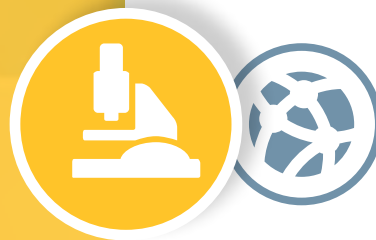
PROJECT BUDGET

**2.12**  
**MILLION €**

ERDF FUNDING

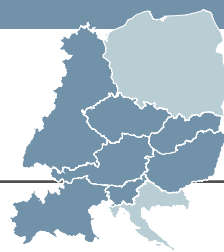
**1.76**  
**MILLION €**

# HELPING ADVANCED MANUFACTURERS TO DEVELOP NEW SERVICES



Adding services to their product portfolio is a chance for small- and medium-sized businesses to become more competitive. However, what they often lack is the know-how to develop these. The ProsperAMnet project changes this. It creates a transnational network that connects actors of the advanced manufacturing sector. The project partners collect transnational experiences and develop new tools and approaches that fit the needs of advanced manufacturers in central Europe.

[www.interreg-central.eu/prosperamnet](http://www.interreg-central.eu/prosperamnet)



AUSTRIA	Oberösterreich
CZECH REPUBLIC	Jihozápad
GERMANY	Niederbayern   Dresden
HUNGARY	Közép-Dunántúl   Dél-Alföld
ITALY	Friuli-Venezia Giulia
SLOVAKIA	Bratislavský kraj
SLOVENIA	Zahodna Slovenija



PROJECT BUDGET

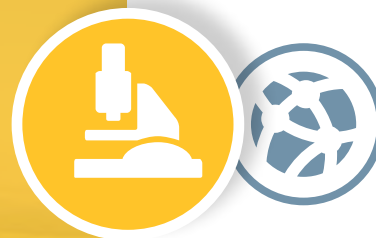
**1.90  
MILLION €**

ERDF FUNDING

**1.55  
MILLION €**

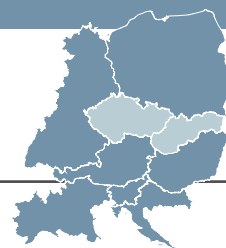


# DIGITAL INNOVATION HUBS FOR ADVANCED MANUFACTURING



In central Europe, there is much potential for taking forward key technology areas of the advanced manufacturing sector through transnational cooperation. The S3HubsinCE project unleashes this potential by building new cooperation support structures in 10 central European regions. These will support the bottom-up implementation of smart specialisation strategies and dedicated “Digital Innovation Hubs” will enable strategic cooperation between relevant stakeholders.

[www.interreg-central.eu/s3hubsince](http://www.interreg-central.eu/s3hubsince)



AUSTRIA	Kärnten   Burgenland
CROATIA	Kontinentalna Hrvatska
GERMANY	Stuttgart   Chemnitz
HUNGARY	Nyugat-Dunántúl
ITALY	Lombardia   Veneto
POLAND	Małopolskie
SLOVENIA	Vzhodna Slovenija



PROJECT BUDGET

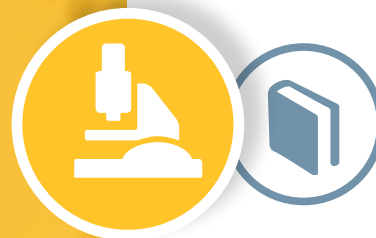
**1.68**  
**MILLION €**

ERDF FUNDING

**1.37**  
**MILLION €**



# HELPING MIGRANTS TO BECOME ENTREPRENEURS



**Interreg**  
CENTRAL EUROPE

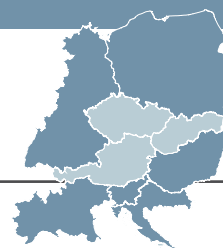


**SEE ME IN**



Migrants who want to start a business in central Europe often face specific legal, cultural and linguistic hurdles. The SEE ME IN project supports this target group in their effort to start a company. The partners identify key training needs for running a company in central Europe and advise on integration into the local environment. The project will also develop a new cloud hub support for young enterprises and support transnational business-to-business learning.

[www.interreg-central.eu/seemein](http://www.interreg-central.eu/seemein)



CROATIA

Kontinentalna Hrvatska

GERMANY

Freiburg

HUNGARY

Észak-Magyarország |  
Közép-Magyarország

ITALY

Lombardia

SLOVENIA

Zahodna Slovenija | Vzhodna  
Slovenija



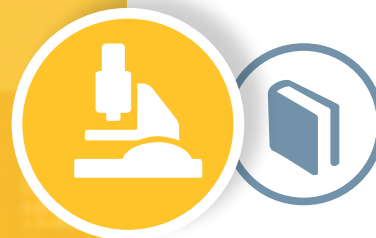
PROJECT BUDGET

**2.13  
MILLION €**

ERDF FUNDING

**1.75  
MILLION €**

# HELPING REGIONS TO BETTER INTEGRATE REFUGEES



**Interreg**  
CENTRAL EUROPE



**SiforREF**

Many central European regions lack administrative skills and services to address the integration of refugees. The SiforREF project improves existing and introduces new refugee integration policies at regional and local levels. It builds the social innovation capacity of regional administrations and focuses particularly on the transition of refugees from reception to autonomy. A key activity of the project is the creation of concrete tools for designing and evaluating innovative practices.

[www.interreg-central.eu/siforref](http://www.interreg-central.eu/siforref)



AUSTRIA

Wien | Niederösterreich

GERMANY

Berlin

ITALY

Veneto | Emilia-Romagna

SLOVENIA

Zahodna Slovenija



PROJECT BUDGET

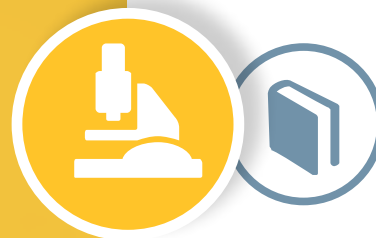
**2.21  
MILLION €**

ERDF FUNDING

**1.79  
MILLION €**

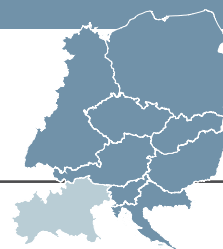


# INCREASING JOB PERSPECTIVES THROUGH A SOCIAL IMPACT FUND



Many central European regions face challenges linked to long-term unemployment and the difficulty of integrating disadvantaged groups into the labour market. The SIV project supports social enterprises and public stakeholders by leveraging private capital and creating a "Social Impact Fund". This fund will finance social innovation such as an incentive scheme for small- and medium-sized businesses to hire long-term unemployed people based on a voucher system.

[www.interreg-central.eu/siv](http://www.interreg-central.eu/siv)



AUSTRIA	Wien
CROATIA	Kontinentalna Hrvatska
CZECH REPUBLIC	Moravskoslezsko
GERMANY	Stuttgart
HUNGARY	Észak-Magyarország
POLAND	Podkarpackie   Mazowieckie
SLOVAKIA	Bratislavský kraj
SLOVENIA	Zahodna Slovenija



PROJECT BUDGET

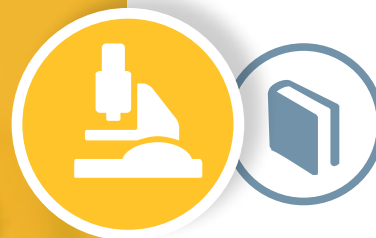
**2.68  
MILLION €**

ERDF FUNDING

**2.22  
MILLION €**

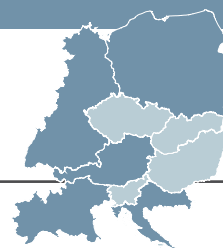


# HOW TO BETTER INTEGRATE MIGRANTS INTO LABOUR MARKETS



The integration of migrants into labour markets and ultimately social systems is a major challenge for regions in central Europe. Social innovation initiatives help to provide answers to this societal challenge. The transnational TASKFORCOME project increases regional engagement and commitment in social innovation and jointly develop support measures for both migrants and social entrepreneurs. Amongst other, partners are developing and testing new tools and training packages for their participating regions.

[www.interreg-central.eu/taskforcome](http://www.interreg-central.eu/taskforcome)



AUSTRIA	Wien   Tirol
CROATIA	Jadranska Hrvatska
GERMANY	Thüringen
ITALY	Marche   Veneto   Lombardia
POLAND	Małopolskie



PROJECT BUDGET

**2.84**  
**MILLION €**

ERDF FUNDING

**2.34**  
**MILLION €**

# MAKING FARMING MORE PRECISE AND FUTURE-READY



Through the use of specialised modern technology, precision farming enables farmers to obtain optimum productivity from their harvest while ensuring sustainability. They need to keep up with latest trends and transnational networks are required. The Transfarm4.0 project brings together companies, R&D performers and farmers to improve regional industrial specialisations. Pools of engineers and researchers will also test innovative tech try-outs in model farms.

[www.interreg-central.eu/transfarm40](http://www.interreg-central.eu/transfarm40)



AUSTRIA

Niederösterreich |  
Oberösterreich

HUNGARY

Közép-Magyarország

ITALY

Veneto | Emilia-Romagna

POLAND

Zachodniopomorskie

SLOVENIA

Vzhodna Slovenija |  
Zahodna Slovenija



PROJECT BUDGET

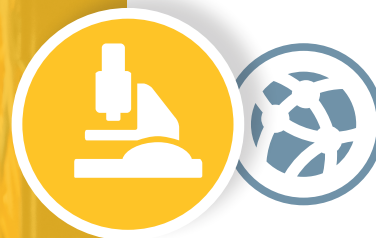
**2.67**  
**MILLION €**

ERDF FUNDING

**2.19**  
**MILLION €**



# HELPING COMPANIES TO GET READY FOR INDUSTRY 4.0



Industry 4.0 can open up new opportunities to local companies. But too often they do not even have the basic knowledge on digitisation or know how to adapt their business strategies. Boost4 BSO connects seven business support organisations (BSOs) and four excellence centres in six central European countries to change this. The project partners develop a comprehensive competence pack and an implementation toolbox to support small and medium sized companies at various levels of their transformation towards Industry 4.0.

[www.interreg-central.eu/boost4bso](http://www.interreg-central.eu/boost4bso)



AUSTRIA	Oberösterreich
ITALY	Friuli-Venezia Giulia   Piemonte
CROATIA	Jadranska Hrvatska
GERMANY	Schwaben
POLAND	Śląskie
CZECH REPUBLIC	Praha



PROJECT BUDGET

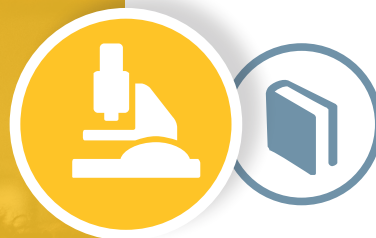
**973**  
**THOUSAND €**

ERDF FUNDING

**793**  
**THOUSAND €**



# MOBILE SUPPORT FOR SOCIAL ENTREPRENEURS IN RURAL REGIONS



**Interreg**  
CENTRAL EUROPE



**CERUSI**

Rural regions often lack structures to support their innovative social entrepreneurs. To help them realise their ideas and to keep them from moving away, CERUSI introduces mobile support structures that build on the idea of “Lab Caravans”. These mobile structures will be a temporary solution to build skills and capacities of social innovators in rural regions. Ultimately, they are envisioned to transform into permanent partnerships between local social innovation actors and their peers across central Europe.

[www.interreg-central.eu/cerusi](http://www.interreg-central.eu/cerusi)



AUSTRIA	Wien   Burgenland
GERMANY	Brandenburg
ITALY	Emilia-Romagna
SLOVENIA	Vzhodna Slovenija
SLOVAKIA	Bratislavský kraj
POLAND	Mazowieckie
CZECH REPUBLIC	Jihozápad



PROJECT BUDGET

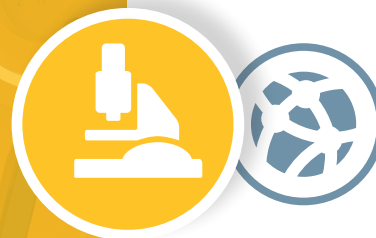
**1.20  
MILLION €**

ERDF FUNDING

**995  
THOUSAND €**

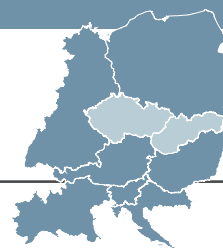


# CREATING INNOVATION SYSTEMS FOR THE DIGITAL FUTURE



Central Europe is home to a large share of Europe's advanced manufacturing companies. To stay competitive these businesses are preparing for the digital future known as Industry 4.0. In this process they need support. Regions have to improve policy frameworks for a smoother digital transformation. CEUP 2030 helps policy makers to set up comprehensive innovation systems based on best-in-class structures and processes. The transnational project partnership creates stable innovation networks which stimulate cooperation between regions, digital innovation hubs and other crucial innovation actors.

[www.interreg-central.eu/ceup2030](http://www.interreg-central.eu/ceup2030)



POLAND	Małopolskie
AUSTRIA	Oberösterreich   Wien
GERMANY	Chemnitz   Karlsruhe
ITALY	Lombardia   Liguria
SLOVENIA	Vzhodna Slovenija
HUNGARY	Nyugat-Dunántúl
CROATIA	Kontinentalna Hrvatska



PROJECT BUDGET

**1.10**  
**MILLION €**

ERDF FUNDING

**901**  
**THOUSAND €**