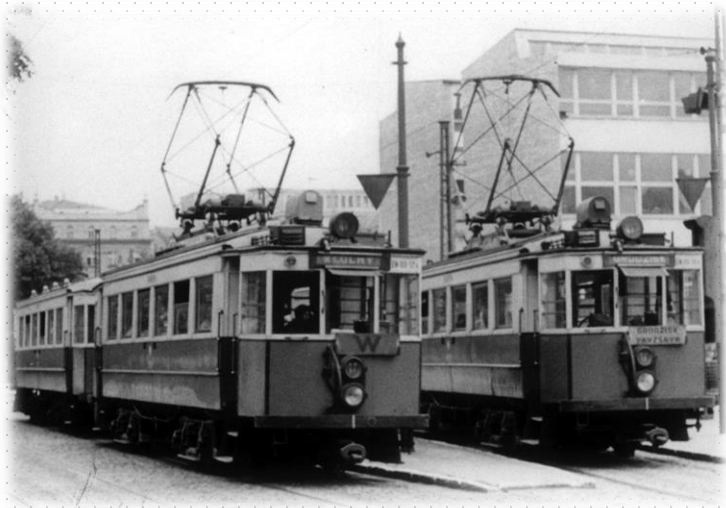


Warsaw Commuter Railway (WKD)

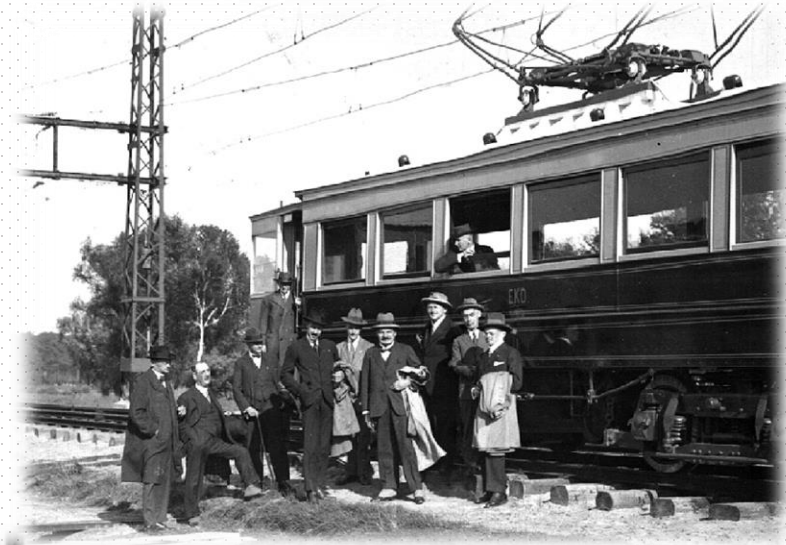
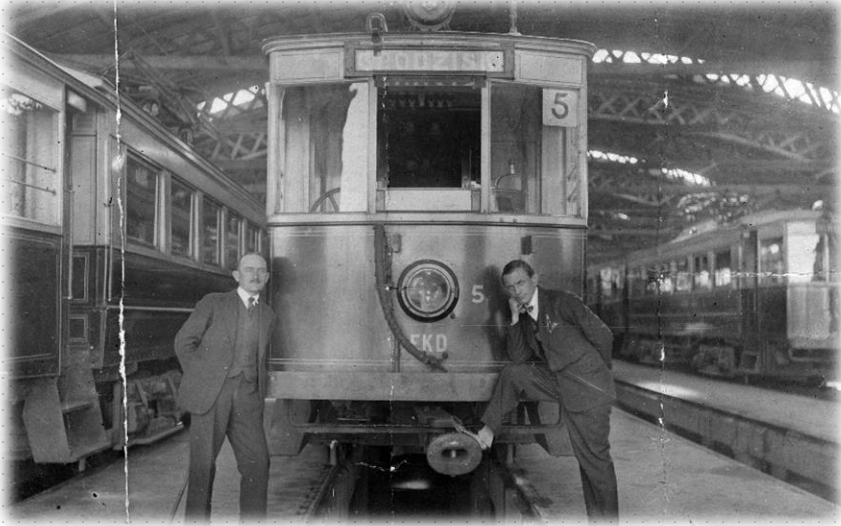
*Past is our strength, future is our main goal
and engagement **YOUNG PEOPLE** is our **HOPE** and **OPPORTUNITY**.*



Warsaw Commuter Railway - PAST

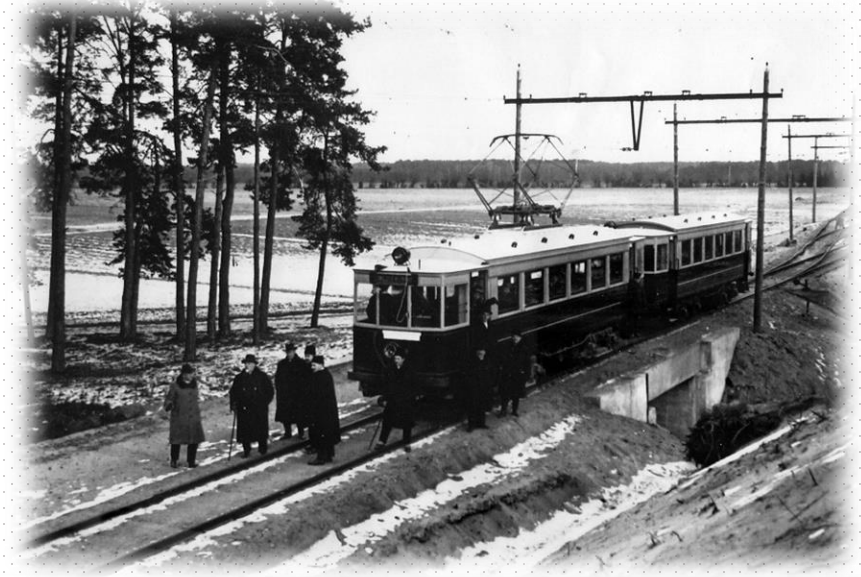
Welcome in Poland in **1927 in Komorów**.
Here begins our history.

In reborn Poland, we are building an
electric railway line called
Electric Commuter Railway (EKD)



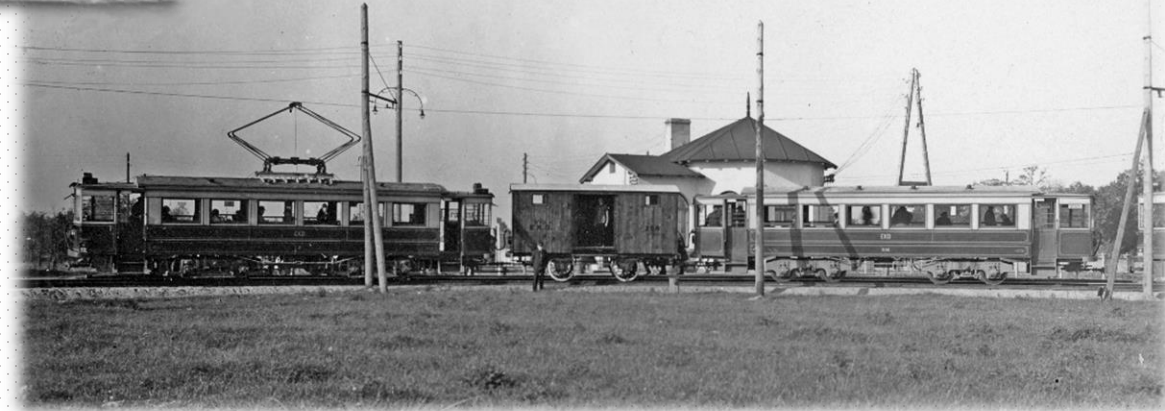
Warsaw Commuter Railway - PAST

In **11th of December 1927** our first trains start taking people from Komorów in both direction to **Warsaw** and **Grodzisk Mazowiecki**.

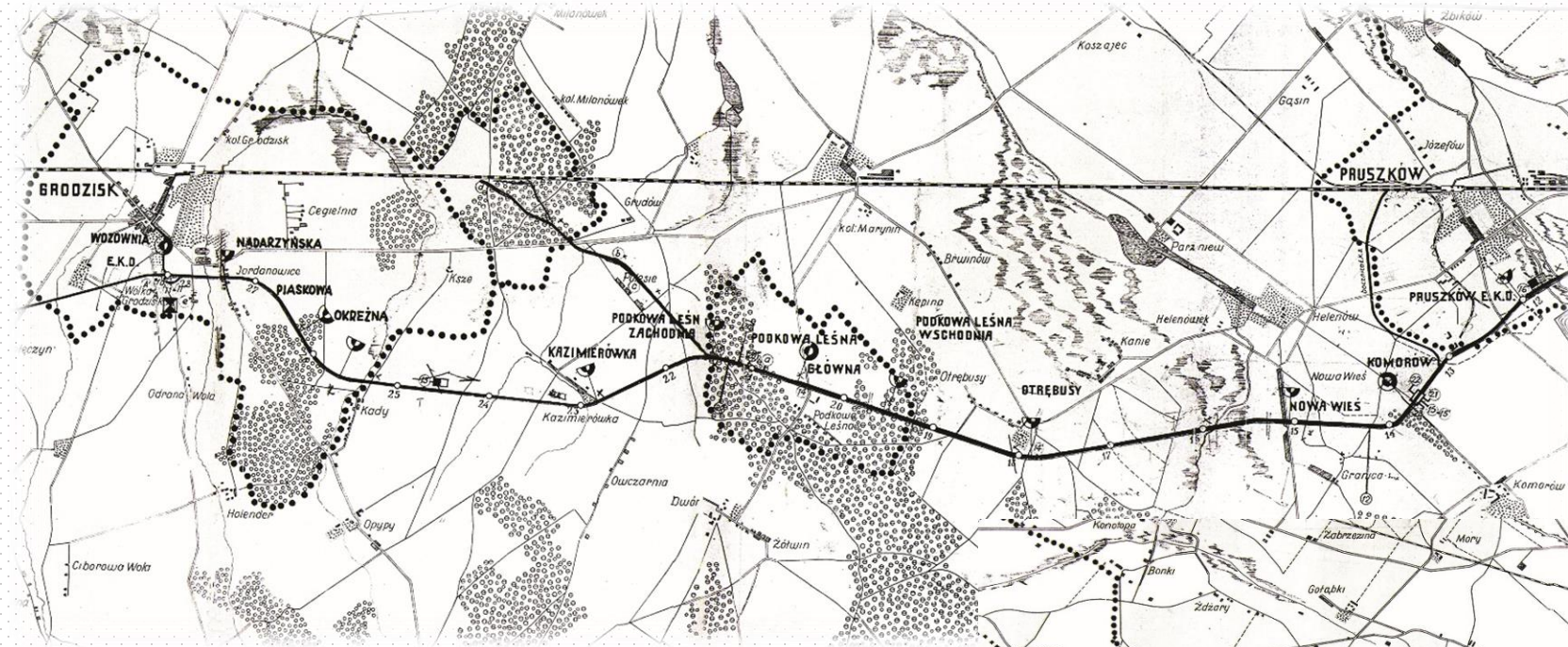


The owner is the private company "**Strength and Light**", existing since 1918, with **English** capital.

We guarantee transport for people living in suburbs to the center of Warsaw, where the population is growing extremely fast.

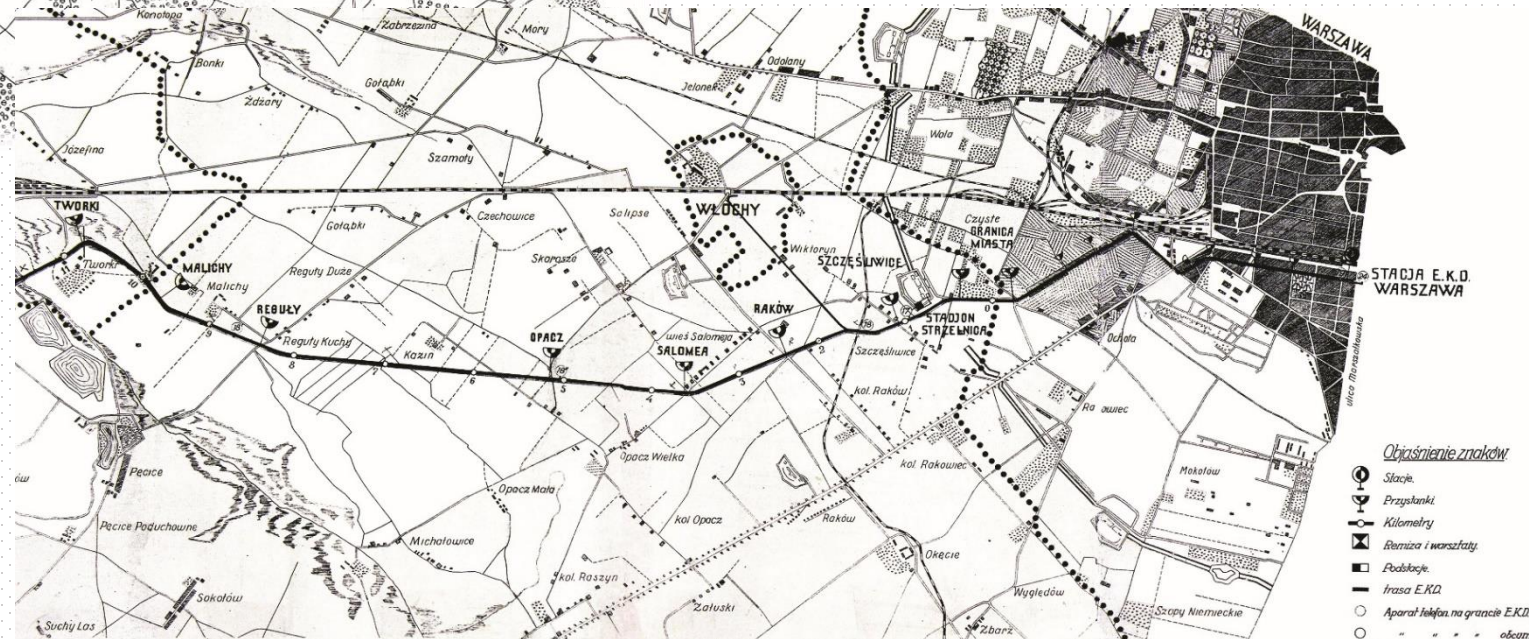


Warsaw Commuter Railway - PAST



From **Warsaw** to **Podkowa Leśna** the line is **double-track** (ca. 25 km long)

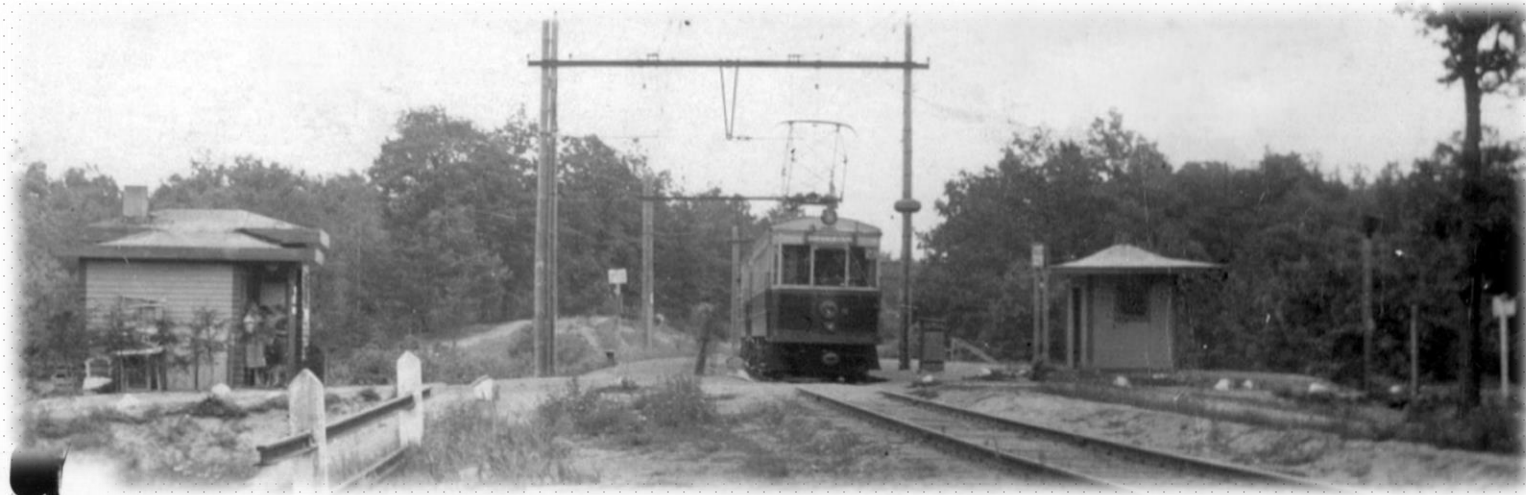
whereas the line to **Grodzisk Mazowiecki** (ca. 7 km) has only **one track**.



Warsaw Commuter Railway - PAST

The length of the **entire line** is **32 km** with intensive plans for further expansion.

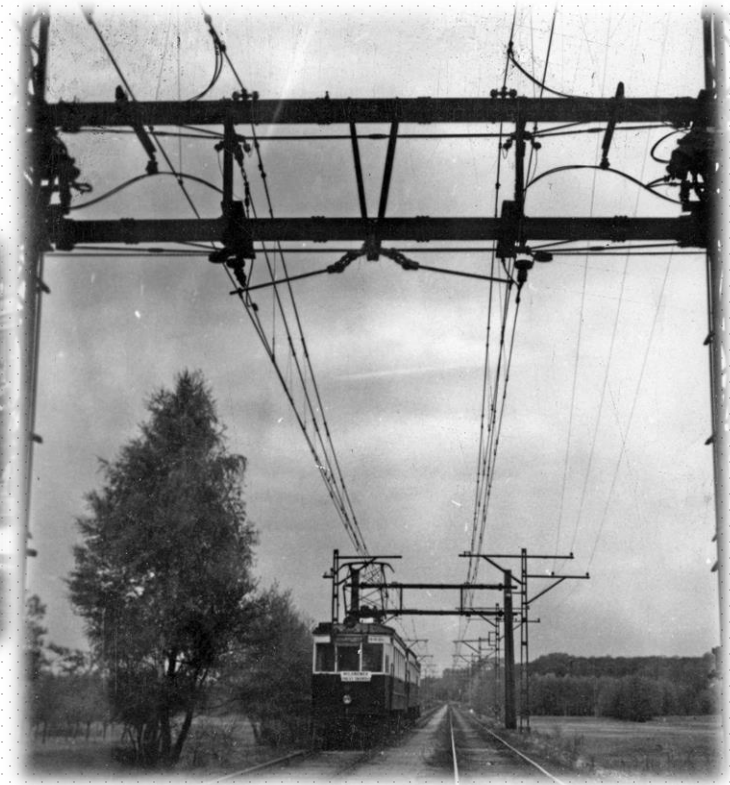
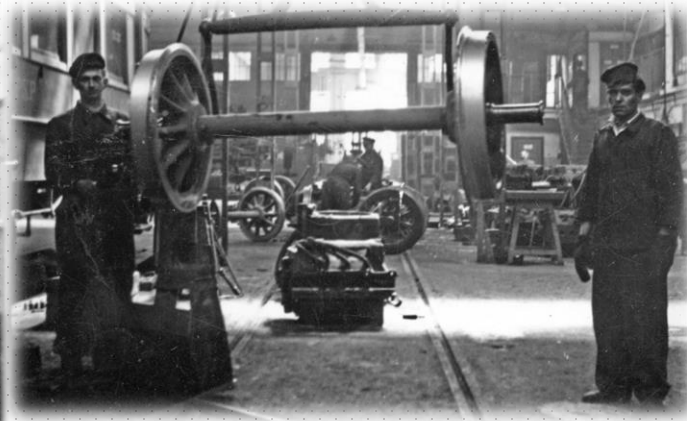
In Warsaw the line was on tramway system.



Warsaw Commuter Railway - PAST

For construction we used the **most modern technical solutions** in this time:

- **semaphores**,
- **crossings** with electric - automatic light and sound signals from **Sweden**,
- **automated telephone** line and system - from **Ericsson's**,
- **wagons** imported from **England** with **Westinghouse air brakes**.



Warsaw Commuter Railway - PAST is our strength



Our **best time** is just **before the Second World War**.
We transport about 4,000 passengers daily.

Warsaw Commuter Railway - PAST

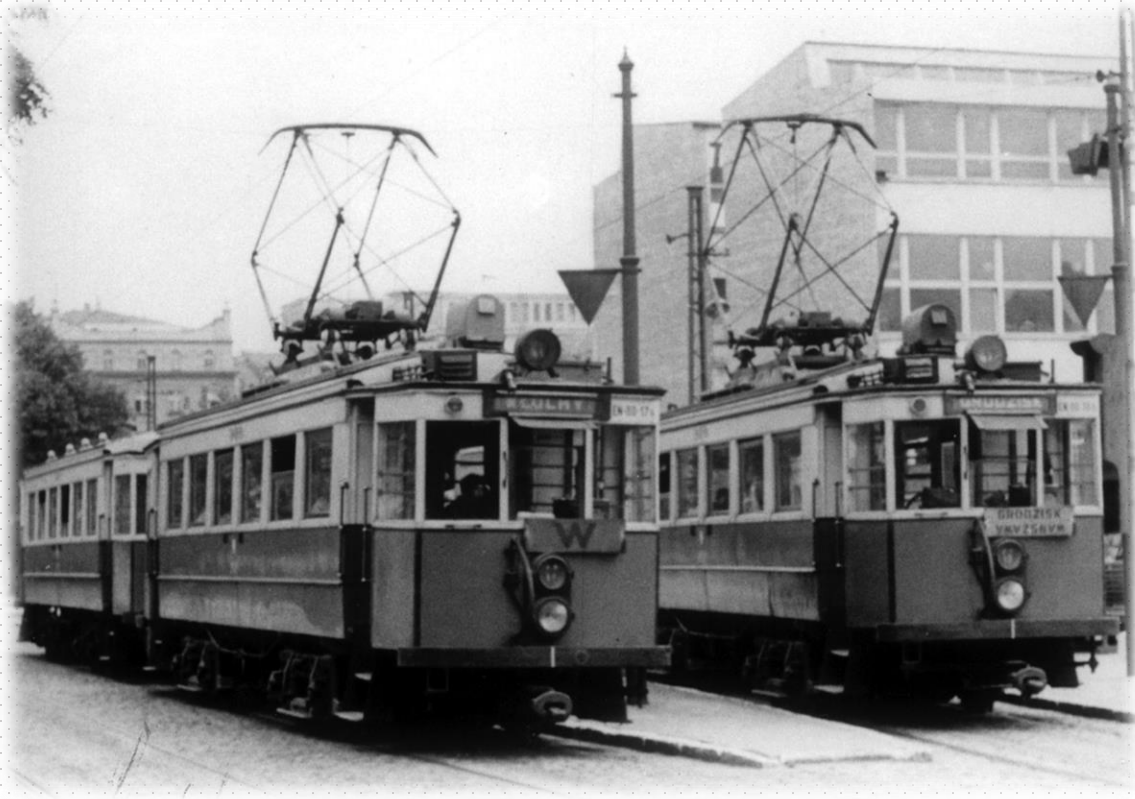
In 1951 Electric Commuter Railway EKD is changed to Warsaw Commuter Railway WKD and change its ownership from private to public hands.

Principles of our management are **reliability, regularity** and **punctuality** of trains.
Even before the war, people said that according to EKD trains "you could set your watch".

And it is the same today ☺



Warsaw Commuter Railway - PAST



In 1972, after 45 years of working, our English wagons were changed into electric wagons series EN94 from Wrocław PaFaWag company.

Warsaw Commuter Railway - TODAY



- Currently we **employ 267 people**.
- Main **administration building and repair hall** is in Grodzisk Mazowiecki.
- According to timetable we offer **192 weektime** and **112 weekends trips daily**, having only **21 train units**.
- Our **punctuality has the highest rate** among all public transportation in Poland - achieving **99,46%** (annual average).

The rolling stock operating on WKD line:

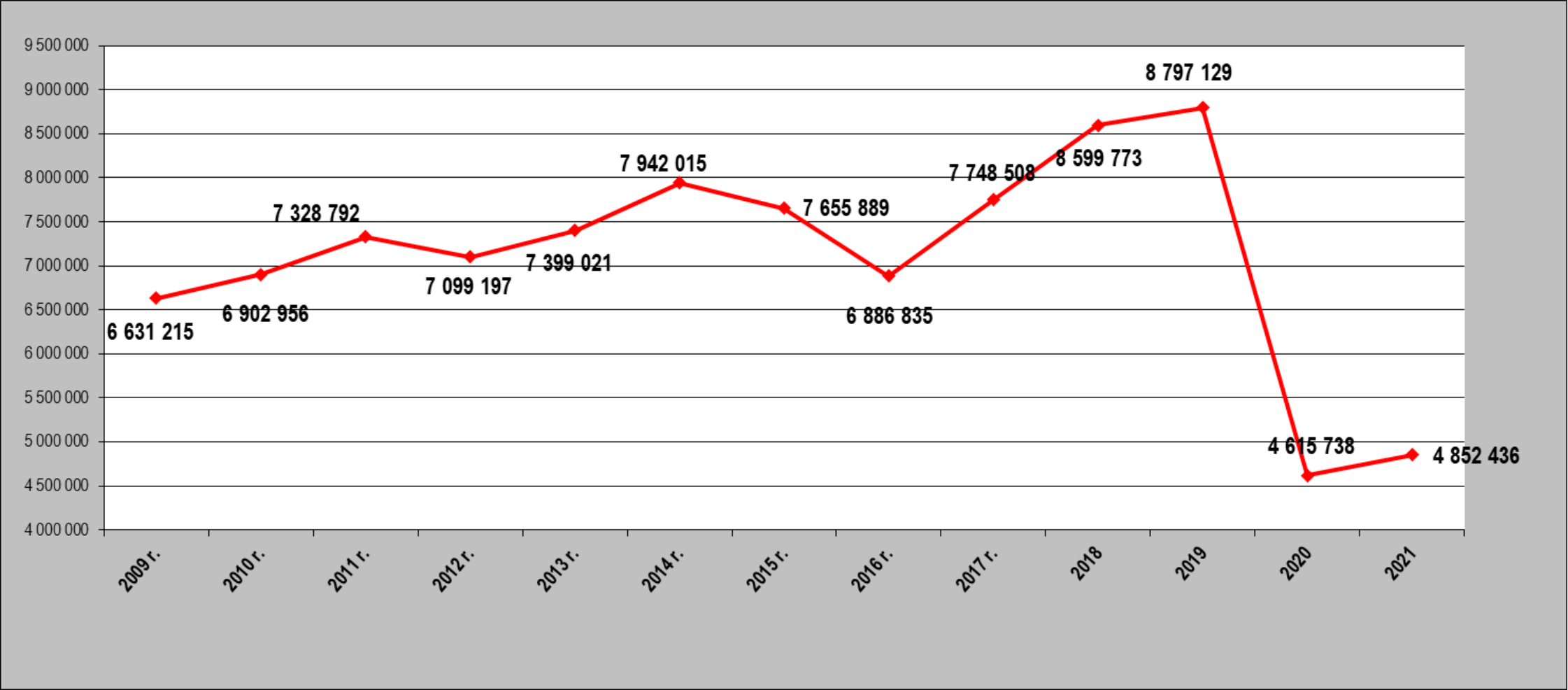
Type of rail vehicles	EN95	EN97	EN100
Number of units	1 pc	14 pcs	6 pcs
Year of construction	2004	2011-2012	2016
Maximum cruising speed	80 km/h	80 km/h	90 km/h
Number of seats	152	124	164
Number of spots for persons using wheelchairs	1	4	4
Number of bicycle racks	2	8	8



Warsaw Commuter Railway - TODAY

Due to pandemic restrictions, last two years was difficult time, which we could feel in numbers.

Even though last year we see **growing tendency** and we **hope soon be back on track** 😊





Warsaw Commuter Railway - TODAY

We cooperate with the Warsaw University of Technology to search for **innovative technical and technological solutions**.

We plan to invest in **technologies friendly for environment**.

Currently we use photovoltaic system, but we are ready to **switch fully on green energy with energy storages**. (OZE - Renewable Energy Systems).



Warsaw Commuter Railway - FROM TODAY TO FUTURE

Our goal is to **build a modern, interactive and inspiring Museum of EKD/WKD** in Grodzisk Mazowiecki.

We plan to **promote public transport** much more than it is now - especially **among children and young people**, as part of the **YOUMOBIL** project.



Warsaw Commuter Railway - FROM TODAY TO FUTURE

In our current building we have **collection of many interesting and valuable exhibits**, but due to lack of space our possibilities are limited.

In the new museum building, we plan to:

- spread knowledge about WKD
- promote our history and passion
- aware eco approach
- create interactive **education spaces**
- **organize meeting areas**
- attract children by interactive **playground**.





Since 2018 on 22th of September we celebrate **Public Transport Day**, where we encourage people to use public transportation by offering free tickets.

We constantly promote our activities by teaching and entertaining all generations.



Warsaw Commuter Railway - engagement YOUNG PEOPLE



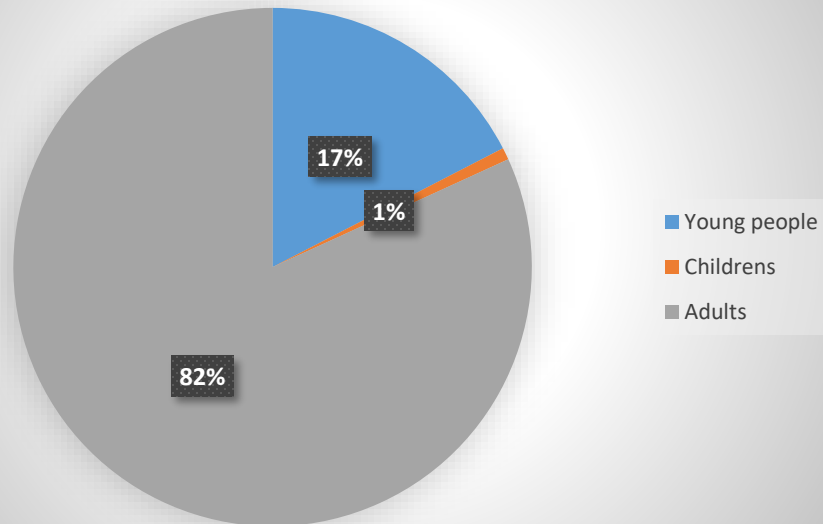
We are looking for ways to **increase range and availability of our transport.**

We already invested in **second truck** from Grodzisk Maz. to Podkowa Leśna station.

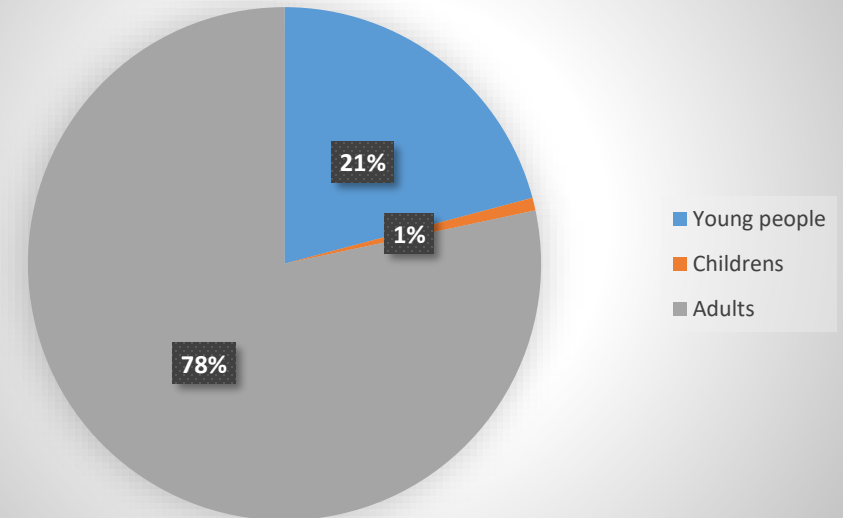
We want to enhance accessibility for young people, to use WKD - especially for those who lives far from WKD stations.

To achieve that we need ...

Passengers in 2019 year



Passengers in 2021 year



Warsaw Commuter Railway - engagement YOUNG PEOPLE



Solar-powered electric vehicles

which are compatible with our principles and **eco future thinking**.



Warsaw Commuter Railway - engagement YOUNG PEOPLE



We are like big family.

Current and former **employees** are engaged and happy to support us by sharing their knowledge, time, experiences and memories.

**Everyday - TOGETHER
we build TOMORROW.**

THANK YOU FOR YOUR ATTENTION

Magdalena Kaczmarek
Project Coordinator in Warsaw Commuter Railway

m.kaczmarek@wkd.com.pl

Grodzisk Mazowiecki

POLAND 

