

TAKING
COOPERATION
FORWARD



Webinar “Re-Use Activation Tools and Networking on European Level”
4th June 2020



How to boost Re-Use with effective networking tools



Agnieszka Kępa, Kujawsko-Pomorskie Voivodeship; Péter Chrabák, Bay Zoltán Nonprofit Ltd. f. Applied Research

Why networking is important and what is its role within SURFACE project?

SURFACE Partnership - Differences

- SURFACE PP coverage: partners from different CE countries and regions
- Various starting points due to different ecosystem in each cases (CEE vs. WE)



IS DIFFERENCE IS A THREAT? - NO, OPPORTUNITY!

SURFACE Partnership - Common Aims

- Cooperative propagation of the relevance of re-use
- Exploitation of collective knowledge
- Inventory on knowledge, practices, contacts and implementation tools



What SURFACE does

- Involves partners from various Central European cities to promote the idea of reuse and its added value to waste prevention initiatives as well as strategies;
- Collects knowledge on re-use related solutions;
- Raises questions and shares answers on re-use;
- Learn about good practices and know-how from other countries and share their knowledge and experience;
- Networking with other partners involving local, regional and international actors and interested stakeholders;



Policy background and motivation on networking

□ Framework Directive in relation with waste prevention:

- ❖ Annex IV. - Examples of Waste Prevention Measures referred to in Article 29
- ❖ *Measures that can affect the consumption and use phase... 16. The promotion of the reuse and/or repair of appropriate discarded products or of their components, notably through the use of educational, economic, logistic or other measures such as support to or establishment of accredited repair and reuse-centres and **networks especially in densely populated regions.***

□ Other related initiatives:

- New Circular Economy Action Plan:
 - ❖ **prioritise reuse and repair** before recycling
 - ❖ „improving product **durability, reusability, upgradability and reparability**
 - ❖ Ecodesign („More than 80% of the environmental impact of a product is determined at the design stage.”)
- Urban Agenda for the EU: Position paper on how to make waste legislation support the circular economy in cities - high priority on re-use and preparing for re-use
- Standardisation initiatives for prolonging use phase of energy related products:
 - ❖ General method for the assessment of the ability to **remanufacture** (EN 45553) to **repair, reuse and upgrade** (EN45554) and **assessment of the durability** (EN45552)

NETWORKING IS A MUST RATHER THAN AN OPTION!

SRPs can only work with cooperation as they are characterized by a certain number of activities. All these activities needs several actors and their cooperation. So networking on the basis of setting up and running a SRP as well as on a bigger scale - European wide networking/cooperation to learn from each other and boost the repair and re-use topic/approach!



BENEFITS OF NETWORKING

Please go to ...

www.menti.com
Code: 36 38 79

What are the benefits of networking for you?

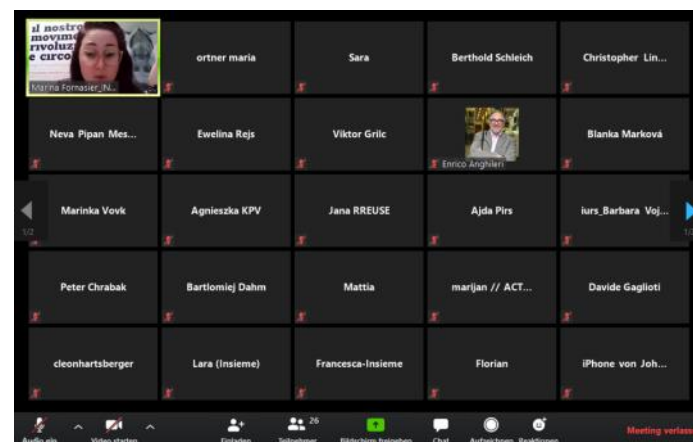


Multi-Stakeholder Forum (MSF)

- ❑ Each Functional Urban Area (where the Smart Re-use Park relates to) has their ecosystem regarding their actors from different domains (municipality, private, NGO, etc.) who can promote and (in)directly contribute to the local/regional waste prevention efforts.
- ❑ Addressing them is of high importance:
 - Colligating the stakeholder ideas, needs and expectations
 - Bottom-up approach for waste prevention integrating environmental and social dimensions
 - Offering space for sharing knowledge and common thinking towards a time- and resource efficient implementation



Personal MSF 1.10.2019 (Budapest)



Virtual MSF via Skype/Zoom



Multi-Stakeholder Forum (MSF)

- ❑ MSF is intended to organise and coordinate the interactions between FUAs and their stakeholders respectively
- ❑ The MSFs have been organised on a 2 month bases during the project duration
- ❑ Discussed topics was predefined and documented (10 meetings overall)
- ❑ MSF partners are encouraged to express their interest on the continuation of the MSF beyond SURFACE project - **local and follow-up agreements!**
- ❑ **MSF is planned to be continued after SURFACE duration on a half-year basis, online.**
- ❑ First „beyond SURFACE” is expected in November 2020. Planned topic: „*Outcomes since SURFACE finish*”
- ❑ Would you like to join?
Please contact us: ortner@atm.or.at



GOOD PRACTICES ON RE-USE NETWORKS IN EUROPE - RREUSE (BELGIUM, EUROPE)



RREUSE NETWORK IMPACT 2018

RREUSE IS AN INDEPENDENT NON-PROFIT ORGANISATION REPRESENTING SOCIAL ENTERPRISES ACTIVE IN THE FIELD OF RE-USE, REPAIR AND RECYCLING

1 000 000 TONNES

[THIS IS EQUIVALENT TO THE WEIGHT OF 137 EIFFEL TOWERS]

OF MATERIAL DIVERTED FROM LANDFILL THROUGH RE-USE, REPAIR AND RECYCLING, WHICH INCLUDED:

FURNITURE
200 000 TONNES
collected

OUT OF WHICH ↓



80 000 TONNES
re-used

TEXTILES
260 000 TONNES
collected

OUT OF WHICH ↓



95 000 TONNES
re-used

ELECTRICALS
290 000 TONNES
collected

OUT OF WHICH ↓



20 000 TONNES
re-used

BOOKS & RECORDS
16 000 TONNES
collected

OUT OF WHICH ↓



5 500 TONNES
re-used

BRIC-A-BRAC
30 000 TONNES
collected

OUT OF WHICH ↓



14 000 TONNES
re-used



**27 MEMBERS ACROSS
25 EUROPEAN COUNTRIES
AND THE USA**

850 SOCIAL ENTERPRISES
ARE PART OF RREUSE'S WIDER NETWORK

**95 000 EMPLOYEES,
VOLUNTEERS AND TRAINEES**
ENGAGED IN THE ACTIVITIES OF
RREUSE'S MEMBERS

**2 000 SHOPS WELCOMED
39 000 000 CUSTOMERS**

[THIS IS EQUIVALENT TO SERVING THE
WHOLE POPULATION OF POLAND]
CONTRIBUTING TO AN OVERALL
RREUSE MEMBER ACTIVITY
TURNOVER OF € 1 200 000 000

RREUSE MEMBERS COLLECTED AND HANDLED **22 DIFFERENT MATERIAL STREAMS:**
FURNITURE, ELECTRICALS, TEXTILES, BOOKS & RECORDS, BRIC-A-BRAC, TOYS, DIY, BICYCLES, CONSTRUCTION MATERIALS, BIOWASTE, VEGETABLE OIL, FOOD DONATIONS,
GLASS, PAPER, WOOD, PACKAGING & PLASTICS, METAL SCRAP, USED CARTRIDGES, BATTERIES, MATTRESSES, PAINT, OTHER MATERIALS

GOOD PRACTICES ON RE-USE NETWORKS IN EUROPE - REPANET (AUSTRIA)

REPANET RepaNet is an environmental and employment creation project based in Graz, Austria. It was part of a development partnership within the EQUAL Community Initiative, part of the European Union's Structural Funds. National umbrella organization of RREUSE.

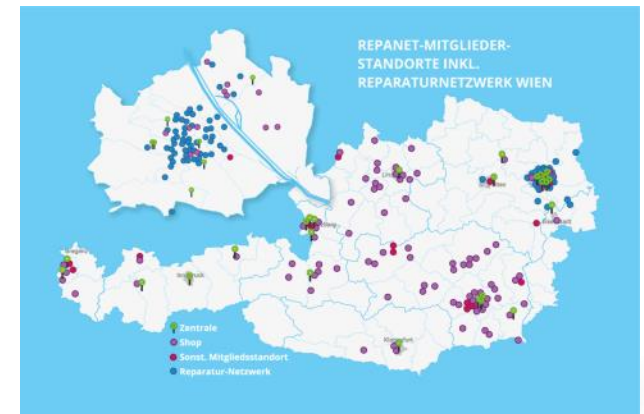
- ❑ „Re-use braucht eine lobby!“ - „Re-use needs a lobby!“
- ❑ 45 members (10 supporting) across Austria
- ❑ ≈ 1,800 jobs

REPANET priorities:

- ❑ Bottom-up approach of re-use related activities
- ❑ Balancing the three pillars of sustainability (ENV, SOC, ECO)
- ❑ Advocating on a national level for facilitations for re-use organizations
- ❑ Minimising the use of resources (during production)

The main activities of the members:

- ❑ connect, consult and inform stakeholders about re-use
- ❑ social enterprises working in reuse and repair, notably with textiles, electronic equipment or furniture
- ❑ DIY-repairing (e.g. repair cafés)
- ❑ Promoting environmental awareness raising on waste avoidance
- ❑ Networking and fertilising the cooperation on re-use

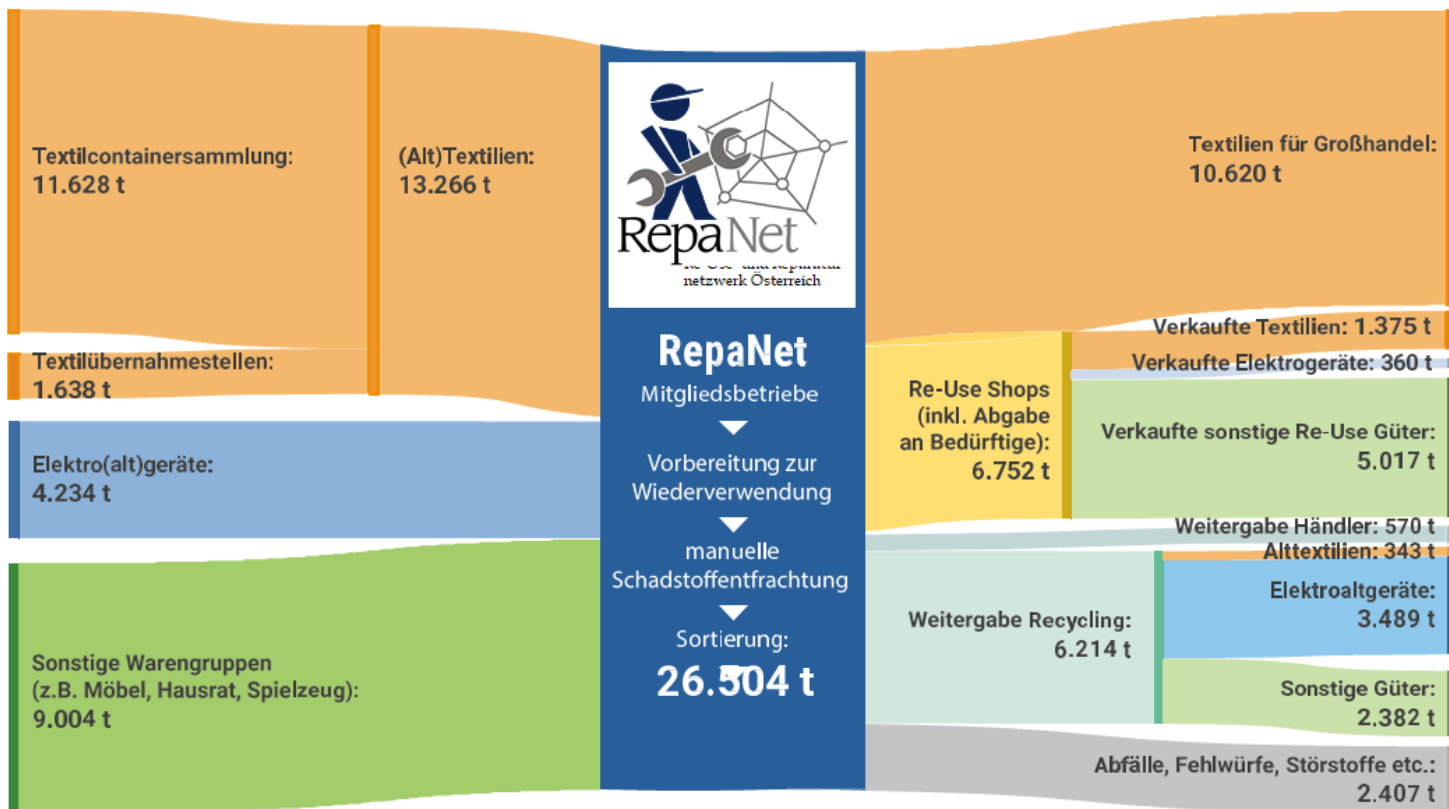


More information: <https://www.repanet.at>



GOOD PRACTICES ON RE-USE NETWORKS IN EUROPE - REPANET (AUSTRIA)

Re-use and recycling related material flow of RepaNet in 2018.



© 2019 RepaNet www.repanet.at



COOPERATION

PROJECT PARTNER ↔ TWINNING PARTNER



Twinning Partners get or can expect:

- tools helpful in setting up Smart Re-Use Parks
- exchange with associated partners and experts
- site visits to all five Smart Re-Use Parks



Twinning Plan



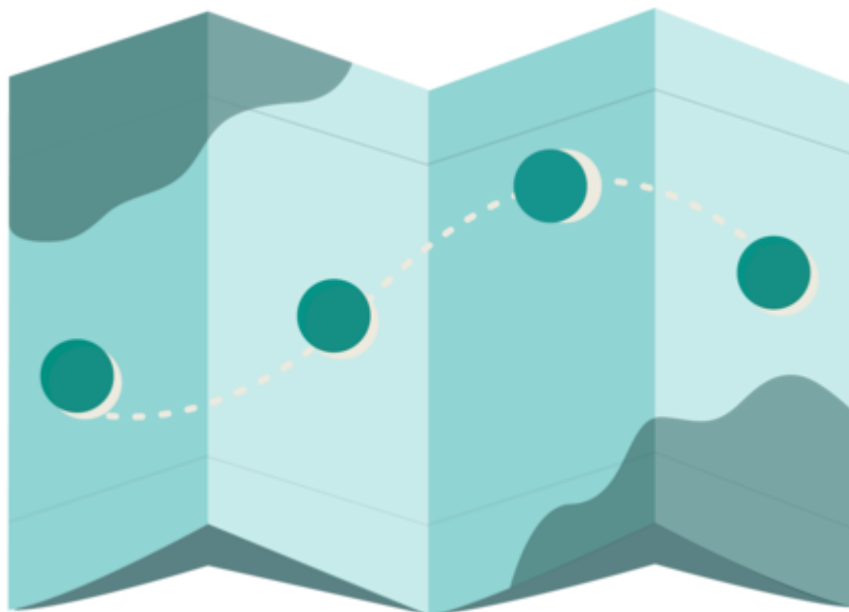
9 new Functional Urban Areas

twinning partners developed
twinning plans

Activation Toolbox
has been developed



Twinning Learning Journeys



TWINNING LEARNING JOURNEYS

BUDAPEST, HUNGARY



TWINNING LEARNING JOURNEYS

KEMPTEN, GERMANY



TWINNING LEARNING JOURNEYS TORUN, POLAND



2 Online Events

- ⇒ Vicenza, Italy (22.4.2020)
- ⇒ Mid-Tyrol, Austria (3.6.2020)

22.04.2020

EVENT

Learning Journey and Twinning Meeting in Vicenza

Due to the Covid-19 emergency, the Learning Journey and Twinning Meeting were held online on April 22. Through an online platform, project partners and their guests met and had a virtual tour of the SRP in Vicenza managed by Cooperativa Sociale INSIEME

Marina Fornasier presented a short **video** of the Smart Re-Use Park in Vicenza, explained the set-up and implementation phase of the SRP.

She shared the lessons learned, gave some advises and hints and ended her presentation with an outlook on the next steps after the SURFACE project. In the end, the participants received a **virtual site**



<https://www.interreg-central.eu/SURFACE>



CONCLUSIONS

- Networking is the basis of setting up and running a SRP
- Also on a bigger scale -> European wide networking/cooperation to learn from each other and boost the repair and re-use topic/approach!
- If you want to join our next Multistakeholderforum in November 2020 please write us in the Zoom-chat or via mail (ortner@atm.or.at)!



THANK YOU FOR YOUR ATTENTION!

