

PILOT ACTION REPORT

PILOT 6

Bedekovčina pilot action report:

D.T3.1.13

PP8

MUNICIPALITY OF BEDEKOVČINA

9 2019



1. Summary description of the pilot action explaining its experimental nature and demonstration character

The main purpose of this project is preservation of cultural heritage and encourage people to learn about the history and famous people they lived in our place. First, we had detailed planning phase which included analysis, studies and detailed design of renovation. Preparation phase included landscape design, planting specific plants, flowers and trees and small infrastructure works that were needed. The works were completed in a way to the best possible measure reflect the historic image and scope of the historical castle park in its golden age. One of the guide ideas was to enable people with difficulties in moving to come and see the castle. Blind people and visually impaired people through this project have possibility to read about history of the Castle Gornja Bedekovčina because Information tables are adjusted to them. This project brings historical heritage closer to all people, regardless of differences. With revitalization of park we gain new knowledge about new tools developed and their usefulness and possible shortcomings, improve quality of life for residence in terms of providing opportunity to spend quality time in nature.

2. Describe stakeholder engagement and involvement during the whole process

We organized workshop with children of local elementary school (3rd & 4th grade) on 14th June 2018. and introduced them pilot project. During conversation we asked them to draw what are their expectations in future for Castle park. Here are some drawings:



First stakeholders meeting was held on 16th January 2019. In Castle Gornja Bedekovčina. During this meeting project “HICAPS” was presented, pilot areas of the Municipality of Bedekovčina and project partners (Municipality of Velenje, City of Varaždin, Scientific research centre Bistra Ptuj). Workshop participants were project partners, citizens and representatives of civil society organizations. The workshop was

attended by institutions and organizations: Bedekovčina Educational Institution for young girls with behavioral problems - an institution operating in the Gornja Bedekovčina Castle, the Krapina Conservation Department, the Public Institution for Protected Areas of Nature Management of Krapina - Zagorje County, the Tourist Board, the Bedekovčina Kindergarten and the Bedekovčina Secondary School.



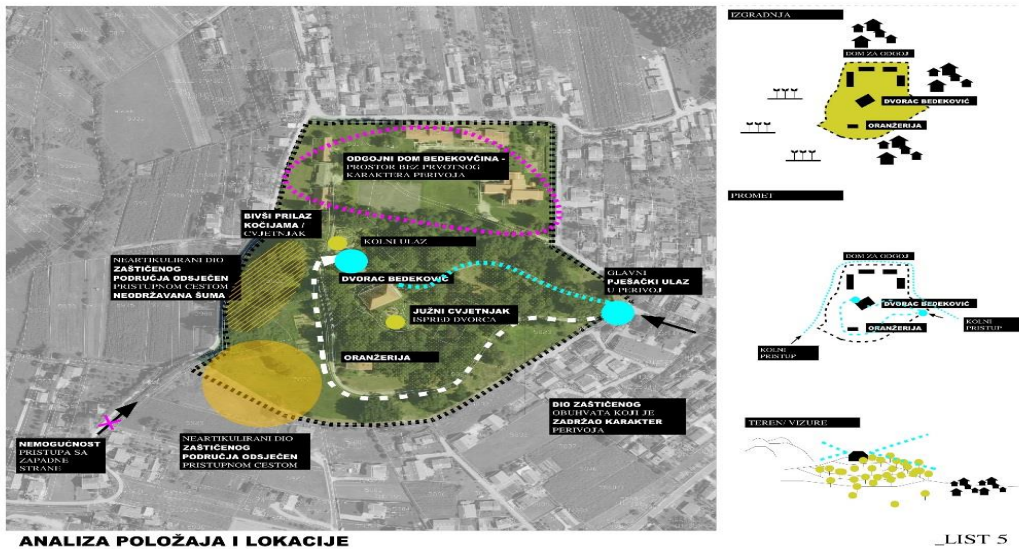
Second stakeholders meeting was held on 27th December 2019. In Castle Gornja Bedekovčina. During this meeting we presented all that was done in project “HICAPS”, especially pilot Castle Gornja Bedekovčina. Workshop participants were project partner City of Varaždin the bedekovčina Kindergarten and Public institution for women youth.



3. Investment location (NUTS 3 region(s), adress, postal code, city, country)

NUTS region HR04 Continental Croatia, relevant NUTS leve is HR043 Krapinsko-zagorska županija

4. Description of the investment, including technical characteristics
 Park area around of the Castle Gornja Bedekovčina is located near to center of Bedekovčina, kindergarten, elementary and secondary school, sports hall, train station, main roads and Bedekovčina lakes.



After detailed planning phase which included analysis, studies and detailed design of renovation, the works were completed in a way to the best possible measure reflect the historic image and scope of the historical castle park in its golden age. Preparation phase included landscape design, planting specific plants, flowers and trees and small infrastructure works that were needed.

After that we started reconstruction works. The surface for renovation encompassed an area of approximately 1,5 km² of land. At first, current pathway of the park was reconstructed after preparing, cleaning the surface and cleaning the moss.

Concrete stairs were built and clinker bricks set up. Clinker bricks symbolize long tradition of production bricks and roofing tile in Bedekovčina and also because of salt and frost resistance, water- resistance and durability. Stairs were projected also for people with reduced mobility to access the Castle more easily: 1,6 m wide, 15 cm high and handrail was set up on 90 cm high. There was no possibility to adopt current pathway for people in wheelchairs. Still, there is driveway they can use to come and see Castle Gornja Bedekovčina. Along the pathway rest areas with benches, garbage bins, solar lamps and information tables are set up. There are 10 pieces of each new urban equipment installed. Information tables are adjusted also for blind people and people with visual impairments

The landscape design and corresponding works included forestry adaptation, works related to rehabilitation centerpiece roundabout in the park and careful selection of

plants and its positions in the park. Planted trees are the ones corresponding to the original setting of the park in the mid-18th Century. In the Park area there are two pieces of five different species of trees: linden tree, ash, chub, horse chestnut and hornbeam.

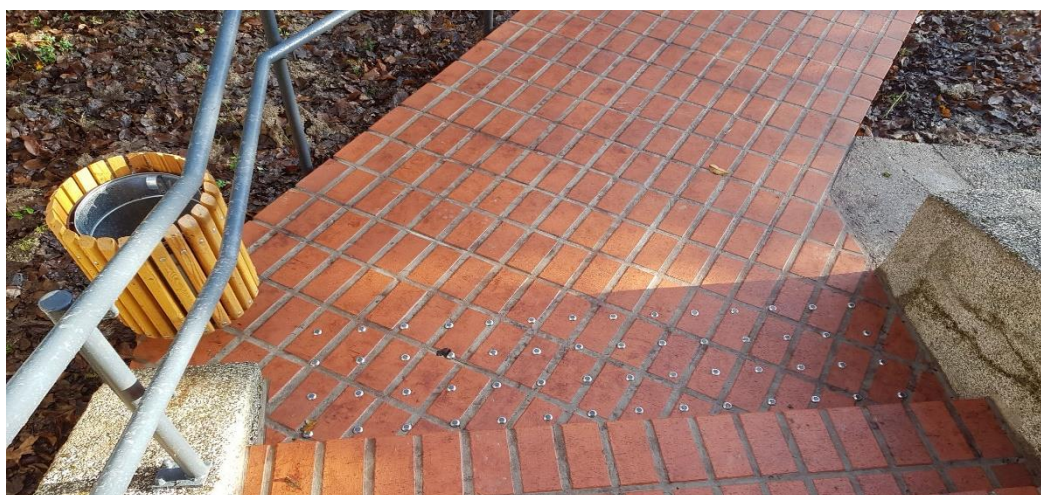
Flower gardens are renewed in front of and behind of the castle. Perennials and bushes are planted: Rhododendron, Hydrangea guercifolia, hydrangea arborescences „Anbelle“ and Cardiac Bergenia.

Next to new plants there are sign boards with basic information on each type of plant.

Walking trail is opened to the public and the realization of the project provides the public the place to spend quality free time outdoors.

5. Which horizontal principles did you take in consideration during preparation and implementation process (equal opportunities, non-discrimination, economic aspect, barrier –free accessibility,)

Stairs in Park were projected also for people with reduced mobility to access the Castle more easily: 1,6 m wide, 15 cm high and handrail was set up on 90 cm high. There was no possibility to adopt current pathway for people in wheelchairs. Still, there is driveway they can use to come and see Castle Gornja Bedekovčina. Tactile pads were placed on stairs and information tables are adjusted for visually impaired persons.



6. Duration and process of investment implementation

Start date 12 2017 End date 11 2019

Preparation of detailed plan regarding technical requirements for pilot.

Designing and printing catalogue with materials about historical parks in Bedekovčina area and some plant species values presented in national language (HR).

Purchase promotional materials with outputs of project cotton bags, notepads, USB and lanyards.

Organization of workshop with children 9 to 10 years old gained knowledge and information about the park and castle.

Regional workshop organization with partners and stakeholders.

Construction works which included renovation of pathway and flowerbed preparation.

New urban equipment was set up. Trees and flowers were planted.

Now we are in process of preparing catalogs in Croatian language with our local project partners.

Local action plan is in last phase-waiting adoption on Municipal council.

7. If applicable, compliance with relevant regulatory requirements

Requirements for reconstruction works by relevant regulatory building permit wasn't necessary. We just needed permission of the conservators because Park Gornja Bedekovčina is cultural heritage and all works must comply with Law on the Protection and Preservation of Cultural Property. Environmental Protection Act is act we must comply with all activities.

8. Major milestones of investment

11 2018 Ordering Revitalization concept and preparing Local action plan with Hršak&Hršak d.o.o.

03 2019 Ordering landscaping project – Ured ovlaštenog krajobraznog arhitekta Robert Duić

07 2019 Contract signed for buying new equipment with Gradevinar Hrvoj

08 2019 Contract signed for reconstruction works - RO-SI građenje i transporti

08 2019 Contract signed for professional supervision of the reconstruction works of the pathway - Hršak&Hršak d.o.o.

09 2019 Reconstruction works started



10 2019 Ordering plants and trees – Jakuš PTP
11 2019 All planned activities were finished





11 2019 Opening ceremony



9. Investment costs (BL5, BL6: including break-down of main costs items) in EUR

Total costs of project 160.543,09 EUR	Total planned costs 122.800,00 EUR
BL 1 = 23.364,22	BL 1 = 23.364,22
BL 2 = 3.504,63	BL 2 = 3.504,63
BL 3 = 6.375,64	BL 3 = 6.375,64
BL 4 = 21.225,51	BL 4 = 21.225,51
BL 5 = 19.711,93	BL 5 = 17.500,00
BL 6 = 86.361,16	BL 6 = 50.830,00

Reals costs are higher than planned because of rising prices on the market.

10. Ownership and durability of the investment (e.g. maintenances, financing)

The owner of the park is a public institution for women youth, but through an agreement with the Municipality of Bedekovčina, Municipality exercises the right to undertake investments and maintenance pilot project in the park. In this respect the ownership of the investment after the end of the project will be retained by the Municipality of Bedekovčina, who will also take care of the maintenance by securing sufficient funds in its yearly budget which will ensure the durability and sustainability of investment. The park is free to enter, available to public and will be promoted by the municipality as a tourist attraction and a historical green oasis for healthy education walks with families and children. Local action plan is document with goals and expected benefits. It is prepared and just need to be adopted. For future investments, we are looking sources of financing.

11. Expected impact and benefits of the pilot action for the concerned territory and target groups

When designing an action plan, specific goals are identified that need to be addressed most, such as: new programmatic content within the park, defining how to use park in future, organization of space through phase in construction, need to enrich the cultural and entertainment offer of the park and the castle, restoration of vegetation. The implementation of the action plan or objectives set out in this action plan can provide the following benefits: creating a new identity and visual recognition, use of space for educational and scientific purpose, improving the quality of life of people with reduced mobility and people with disabilities, increasing the quality of life of the locals, increasing tourist visibility and development of cultural tourism.

It is evident that the implementation of the action plan should result in a significant increase in the quality of life for local population and an increase in the public standard. The introduction of new facilities would increase the number of tourist visits and thus the demand for new catering facilities, which means increase the level of economic activity.

12. Lessons learned from the implementation of the pilot action

Unexpected complication was finding supplier for equipment and reconstruction works. We had problem because of budget and people. Prices of work and equipment were much higher then we planned in our budget. Another problem was insufficient number of workers in our country, so companies have no enough people to work normally. On the other side, there are benefits of being partner in “HICAPS” project:

Getting know better partner 's culture and the way how they protect cultural and historical heritage. We learned by reading about project, but most importantly, pn workshops with partners. We had excellent cooperation with all partners and all possible support of Lead partner Municipality of Velenje.

13. Transferability to other territories and stakeholders

Municipality of Bedekovčina is one of the founders Tourist board "Srce Zagorja". This organization promotes tourism and culture for five Municipalities in our region. Revitalization of Park Gornja Bedkovčina ensures new destination to offer tourist for visit. Through our county there is cycling route and Park Gornja Bedekovčina is planned to be one stopping point.

14. Added value of transnational cooperation

HICAPS project enables connecting with new partners and their projects. Getting know better partner's cultural heritage and way how they protect cultural and historical heritage. Partnership will develop transnational strategy on evaluation of cultural heritage and potentials of historical parks, including gathering transnational best practice. This document will empower the local and regional authorities with effective tools for planning investment process.

15. References to relevant deliverables and web links

Deliverable D.T3.1.1. Concept design (not on web)

<https://www.interreg-central.eu/Content.Node/discover/Output-Library.html>

Deliverable D.T3.1.12. Detailed plan (not on web)

Deliverable D.T1.1.3. GPAR

<https://www.interreg-central.eu/Content.Node/HICAPS.html>

16. Pictures and some images



